

Anti-GRK7 antibody (340-420 Internal) (STJ93437)

STJ93437

GENERAL INFORMATION

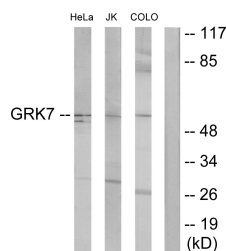
Product Type	Primary antibodies
Short Description	Rabbit polyclonal antibody anti-Rhodopsin Kinase Grk7 (340-420 Internal) is suitable for use in Western Blot, Immunofluorescence, Immunocytochemistry and ELISA research applications.
Applications	WB, IF, ICC, ELISA
Host/Source	Rabbit
Reactivity	Human, Rat, Mouse

PRODUCT PROPERTIES

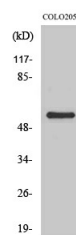
Clonality	Polyclonal
Clone ID	
Concentration	1 mg/mL
Conjugation	Unconjugated
Purification	The antibody was affinity-purified from rabbit anti-serum by affinity-chromatography.
Dilution Range	WB 1:500-1:2000 IF 1:200-1:1000 ELISA 1:20000
Formulation	PBS, 50% Glycerol, 0.5% BSA and 0.02% Sodium Azide.
Isotype	IgG
Storage Instruction	Store at -20°C for up to 1 year from the date of receipt, and avoid repeat freeze-thaw cycles.

TARGET INFORMATION

Gene ID	131890
Gene Symbol	GRK7
Uniprot ID	GRK7_HUMAN
Immunogen	The antiserum was produced against synthesized peptide derived from human GRK7 at amino acid range 371-420
Immunogen Region	340-420 Internal
Specificity	GRK7 polyclonal antibody (Rhodopsin Kinase Grk7) binds to endogenous Rhodopsin Kinase Grk7 at the amino acid region 340-420 Internal.
Immunogen Sequence	



Western blot analysis of lysates from COLO205, Jurkat, and HeLa cells, using GRK7 Antibody. The lane on the right is blocked with the synthesized peptide.



Western blot analysis of various cells using GRK7 Polyclonal Antibody.

This product is suitable for in-vitro studies under the RESEARCH USE ONLY [RUO] licence. This product must not be used as for diagnostic or other medical purposes.
St John's Laboratory Ltd, Knowledge Dock Business Centre, University Way, London, E16 2RD | Tel: 0208 223 3081