

Anti-GRK5 antibody (320-400 Internal) (STJ93435)

STJ93435

GENERAL INFORMATION

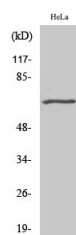
Product Type	Primary antibodies
Short Description	Rabbit polyclonal antibody anti-G Protein-Coupled Receptor Kinase 5 (320-400 Internal) is suitable for use in Western Blot, Immunohistochemistry, Immunofluorescence and ELISA research applications.
Applications	WB, IHC-P, IF-P, ELISA
Host/Source	Rabbit
Reactivity	Human, Mouse, Rat

PRODUCT PROPERTIES

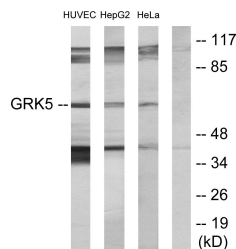
Clonality	Polyclonal
Clone ID	
Concentration	1 mg/mL
Conjugation	Unconjugated
Purification	The antibody was affinity-purified from rabbit anti-serum by affinity-chromatography.
Dilution Range	WB 1:500-1:2000 IHC 1:100-1:300 ELISA 1:10000
Formulation	PBS, 50% Glycerol, 0.5% BSA and 0.02% Sodium Azide.
Isotype	IgG
Storage Instruction	Store at -20°C for up to 1 year from the date of receipt, and avoid repeat freeze-thaw cycles.

TARGET INFORMATION

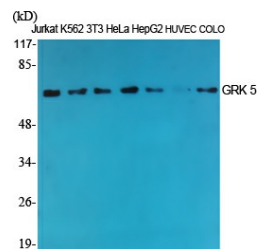
Gene ID	2869
Gene Symbol	GRK5
Uniprot ID	GRK5_HUMAN
Immunogen	The antiserum was produced against synthesized peptide derived from human GRK5 at amino acid range 351-400
Immunogen Region	320-400 Internal
Specificity	GRK5 polyclonal antibody (G Protein-Coupled Receptor Kinase 5) binds to endogenous G Protein-Coupled Receptor Kinase 5 at the amino acid region 320-400 Internal.
Immunogen Sequence	



Western blot analysis of COLO205 cells using GRK 5 Polyclonal Antibody



Western blot analysis of lysates from HeLa, HepG2, and HUVEC cells, using GRK5 Antibody. The lane on the right is blocked with the synthesized peptide.



Western blot analysis of various cells using GRK 5 Polyclonal Antibody

This product is suitable for in-vitro studies under the RESEARCH USE ONLY [RUO] licence. This product must not be used as for diagnostic or other medical purposes.
St John's Laboratory Ltd, Knowledge Dock Business Centre, University Way, London, E16 2RD | Tel: 0208 223 3081