

Anti-GRK3 antibody (330-410 Internal) (STJ93433)

STJ93433

GENERAL INFORMATION

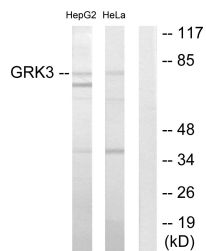
Product Type	Primary antibodies
Short Description	Rabbit polyclonal antibody anti-Beta-Adrenergic Receptor Kinase 2 (330-410 Internal) is suitable for use in Western Blot, Immunohistochemistry, Immunofluorescence and ELISA research applications.
Applications	WB, IHC-P, IF-P, ELISA
Host/Source	Rabbit
Reactivity	Human, Mouse, Rat

PRODUCT PROPERTIES

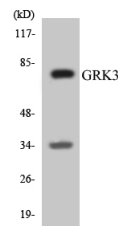
Clonality	Polyclonal
Clone ID	
Concentration	1 mg/mL
Conjugation	Unconjugated
Purification	The antibody was affinity-purified from rabbit anti-serum by affinity-chromatography.
Dilution Range	WB 1:500-1:2000 IHC 1:100-1:300 ELISA 1:20000
Formulation	PBS, 50% Glycerol, 0.5% BSA and 0.02% Sodium Azide.
Isotype	IgG
Storage Instruction	Store at -20°C for up to 1 year from the date of receipt, and avoid repeat freeze-thaw cycles.

TARGET INFORMATION

Gene ID	157
Gene Symbol	GRK3
Uniprot ID	ARBK2_HUMAN
Immunogen Region	The antiserum was produced against synthesized peptide derived from human GRK3 at amino acid range 361-410
Immunogen Region	330-410 Internal
Specificity	GRK3 polyclonal antibody (Beta-Adrenergic Receptor Kinase 2) binds to endogenous Beta-Adrenergic Receptor Kinase 2 at the amino acid region 330-410 Internal.
Immunogen Sequence	



Western blot analysis of lysates from HepG2 and HeLa cells, using GRK3 Antibody. The lane on the right is blocked with the synthesized peptide.



Western blot analysis of the lysates from K562 cells using GRK3 antibody.



Western blot analysis of various cells using GRK 3 Polyclonal Antibody diluted at 1: 500

This product is suitable for in-vitro studies under the RESEARCH USE ONLY [RUO] licence. This product must not be used as for diagnostic or other medical purposes.
St John's Laboratory Ltd, Knowledge Dock Business Centre, University Way, London, E16 2RD | Tel: 0208 223 3081