

Anti-GRK1 antibody (1-80) (STJ93428)

STJ93428

GENERAL INFORMATION

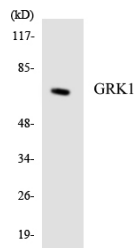
Product Type	Primary antibodies
Short Description	Rabbit polyclonal antibody anti-Rhodopsin Kinase Grk1 (1-80) is suitable for use in Western Blot, Immunohistochemistry, Immunofluorescence and ELISA research applications.
Applications	WB, IHC-P, IF-P, ELISA
Host/Source	Rabbit
Reactivity	Human, Mouse, Rat

PRODUCT PROPERTIES

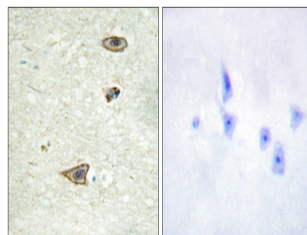
Clonality	Polyclonal
Clone ID	
Concentration	1 mg/mL
Conjugation	Unconjugated
Purification	The antibody was affinity-purified from rabbit anti-serum by affinity-chromatography.
Dilution Range	WB 1:500-1:2000 IHC 1:100-1:300 ELISA 1:40000
Formulation	PBS, 50% Glycerol, 0.5% BSA and 0.02% Sodium Azide.
Isotype	IgG
Storage Instruction	Store at -20°C for up to 1 year from the date of receipt, and avoid repeat freeze-thaw cycles.

TARGET INFORMATION

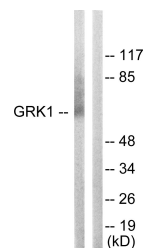
Gene ID	6011
Gene Symbol	GRK1
Uniprot ID	GRK1_HUMAN
Immunogen	The antiserum was produced against synthesized peptide derived from human GRK1 at amino acid range 6-55
Immunogen Region	1-80
Specificity	GRK1 polyclonal antibody (Rhodopsin Kinase Grk1) binds to endogenous Rhodopsin Kinase Grk1 at the amino acid region 1-80.
Immunogen Sequence	



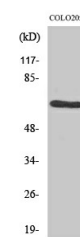
Western blot analysis of the lysates from Jurkat cells using GRK1 antibody.



Immunohistochemistry analysis of paraffin-embedded human brain tissue, using GRK1 Antibody. The picture on the right is blocked with the synthesized peptide.



Western blot analysis of lysates from COLO205 cells, using GRK1 Antibody. The lane on the right is blocked with the synthesized peptide.



Western blot analysis of various cells using GRK 1 Polyclonal Antibody