

Anti-GPRIN3 antibody (100-180 Internal) (STJ93426)

STJ93426

GENERAL INFORMATION

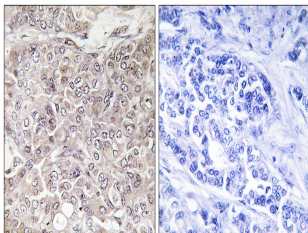
Product Type	Primary antibodies
Short Description	Rabbit polyclonal antibody anti-G Protein-Regulated Inducer Of Neurite Outgrowth 3 (100-180 Internal) is suitable for use in Immunohistochemistry, Immunofluorescence and ELISA research applications.
Applications	IHC-P, IF-P, ELISA
Host/Source	Rabbit
Reactivity	Human, Rat, Mouse

PRODUCT PROPERTIES

Clonality	Polyclonal
Clone ID	
Concentration	1 mg/mL
Conjugation	Unconjugated
Purification	The antibody was affinity-purified from rabbit anti-serum by affinity-chromatography.
Dilution	IHC 1:100-1:300
Range	ELISA 1:40000
Formulation	PBS, 50% Glycerol, 0.5% BSA and 0.02% Sodium Azide.
Isotype	IgG
Storage	Store at -20°C for up to 1 year from the date of receipt, and avoid repeat freeze-thaw cycles.
Instruction	

TARGET INFORMATION

Gene ID	285513
Gene Symbol	GPRIN3
Uniprot ID	GRIN3_HUMAN
Immunogen	The antiserum was produced against synthesized peptide derived from human GPRIN3 at amino acid range 131-180
Immunogen Region	100-180 Internal
Specificity	GPRIN3 polyclonal antibody (G Protein-Regulated Inducer Of Neurite Outgrowth 3) binds to endogenous G Protein-Regulated Inducer Of Neurite Outgrowth 3 at the amino acid region 100-180 Internal.
Immunogen Sequence	



Immunohistochemistry analysis of paraffin-embedded human breast carcinoma, using GPRIN3 Antibody. The picture on the right is blocked with the synthesized peptide.