

Anti-GPRIN2 antibody (30-110 N-Term) (STJ93425)

STJ93425

GENERAL INFORMATION

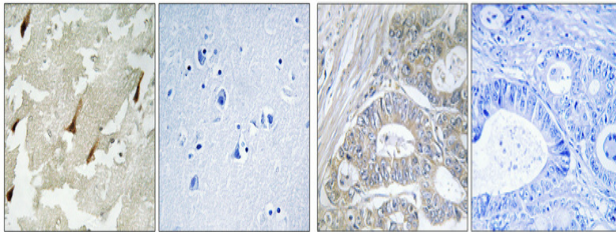
| | |
|--------------------------|---|
| Product Type | Primary antibodies |
| Short Description | Rabbit polyclonal antibody anti-G Protein-Regulated Inducer Of Neurite Outgrowth 2 (30-110 N-Term) is suitable for use in Western Blot, Immunohistochemistry, Immunofluorescence and ELISA research applications. |
| Applications | WB, IHC-P, IF-P, ELISA |
| Host/Source | Rabbit |
| Reactivity | Human, Rat, Mouse |

PRODUCT PROPERTIES

| | |
|----------------------------|--|
| Clonality | Polyclonal |
| Clone ID | |
| Concentration | 1 mg/mL |
| Conjugation | Unconjugated |
| Purification | The antibody was affinity-purified from rabbit anti-serum by affinity-chromatography. |
| Dilution Range | WB 1:500-1:2000 IHC 1:100-1:300 ELISA 1:40000 |
| Formulation | PBS, 50% Glycerol, 0.5% BSA and 0.02% Sodium Azide. |
| Isotype | IgG |
| Storage Instruction | Store at -20°C for up to 1 year from the date of receipt, and avoid repeat freeze-thaw cycles. |

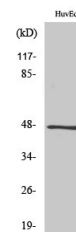
TARGET INFORMATION

| | |
|---------------------------|--|
| Gene ID | 9721 |
| Gene Symbol | GPRIN2 |
| Uniprot ID | GRIN2_HUMAN |
| Immunogen | The antiserum was produced against synthesized peptide derived from human GPRIN2 at amino acid range 11-60 |
| Immunogen Region | 30-110 N-Term |
| Specificity | GPRIN2 polyclonal antibody (G Protein-Regulated Inducer Of Neurite Outgrowth 2) binds to endogenous G Protein-Regulated Inducer Of Neurite Outgrowth 2 at the amino acid region 30-110 N-Term. |
| Immunogen Sequence | |



Immunohistochemical analysis of paraffin-embedded Human brain. Antibody was diluted at 1:100 (4°C overnight). High-pressure and temperature Tris-EDTA, pH8.0 was used for antigen retrieval. Negative control (right) obtained from antibody was pre-absorbed by immunogen peptide.

Immunohistochemical analysis of paraffin-embedded Human colon cancer. Antibody was diluted at 1:100 (4°C overnight). High-pressure and temperature Tris-EDTA, pH8.0 was used for antigen retrieval. Negative control (right) obtained from antibody was pre-absorbed by immunogen peptide.



Western blot analysis of various cells using GRIN2 Polyclonal Antibody

This product is suitable for in-vitro studies under the RESEARCH USE ONLY [RUO] licence. This product must not be used as for diagnostic or other medical purposes.
St John's Laboratory Ltd, Knowledge Dock Business Centre, University Way, London, E16 2RD | Tel: 0208 223 3081