

Anti-GPRIN1 antibody (200-280 Internal) (STJ93424)

STJ93424

GENERAL INFORMATION

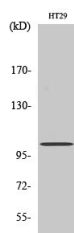
Product Type	Primary antibodies
Short Description	Rabbit polyclonal antibody anti-G Protein-Regulated Inducer Of Neurite Outgrowth 1 (200-280 Internal) is suitable for use in Western Blot and ELISA research applications.
Applications	WB, ELISA
Host/Source	Rabbit
Reactivity	Human, Rat, Mouse

PRODUCT PROPERTIES

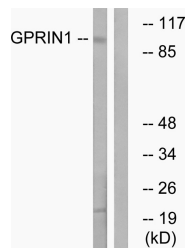
Clonality	Polyclonal
Clone ID	
Concentration	1 mg/mL
Conjugation	Unconjugated
Purification	The antibody was affinity-purified from rabbit anti-serum by affinity-chromatography.
Dilution	WB 1:500-1:2000
Range	ELISA 1:40000
Formulation	PBS, 50% Glycerol, 0.5% BSA and 0.02% Sodium Azide.
Isotype	IgG
Storage	Store at -20°C for up to 1 year from the date of receipt, and avoid repeat freeze-thaw cycles.
Instruction	

TARGET INFORMATION

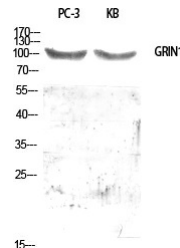
Gene ID	114787
Gene Symbol	GPRIN1
Uniprot ID	GRIN1_HUMAN
Immunogen	The antiserum was produced against synthesized peptide derived from human GPRIN1 at amino acid range 231-280
Immunogen Region	200-280 Internal
Specificity	GPRIN1 polyclonal antibody (G Protein-Regulated Inducer Of Neurite Outgrowth 1) binds to endogenous G Protein-Regulated Inducer Of Neurite Outgrowth 1 at the amino acid region 200-280 Internal.
Immunogen Sequence	



Western blot analysis of HT29 cells using GRIN1 Polyclonal Antibody diluted at 1: 500



Western blot analysis of lysates from HT-29 cells, using GPRIN1 Antibody. The lane on the right is blocked with the synthesized peptide.



Western blot analysis of various cells using GRIN1 Polyclonal Antibody diluted at 1: 500

This product is suitable for in-vitro studies under the RESEARCH USE ONLY [RUO] licence. This product must not be used as for diagnostic or other medical purposes.
 St John's Laboratory Ltd, Knowledge Dock Business Centre, University Way, London, E16 2RD | Tel: 0208 223 3081