

Anti-ARHGAP35 antibody (1040-1120) (STJ93422)

STJ93422

GENERAL INFORMATION

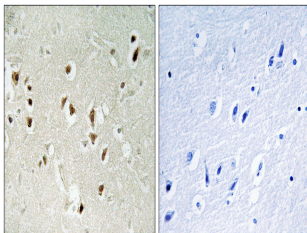
Product Type	Primary antibodies
Short Description	Rabbit polyclonal antibody anti-Rho Gtpase-Activating Protein 35 (1040-1120) is suitable for use in Immunohistochemistry, Immunofluorescence and ELISA research applications.
Applications	IHC-P, IF-P, ELISA
Host/Source	Rabbit
Reactivity	Human, Mouse, Rat

PRODUCT PROPERTIES

Clonality	Polyclonal
Clone ID	
Concentration	1 mg/mL
Conjugation	Unconjugated
Purification	The antibody was affinity-purified from rabbit anti-serum by affinity-chromatography.
Dilution Range	IHC 1:100-1:300 ELISA 1:5000
Formulation	PBS, 50% Glycerol, 0.5% BSA and 0.02% Sodium Azide.
Isotype	IgG
Storage	Store at -20°C for up to 1 year from the date of receipt, and avoid repeat freeze-thaw cycles.
Instruction	

TARGET INFORMATION

Gene ID	2909
Gene Symbol	ARHGAP35
Uniprot ID	RHG35_HUMAN
Immunogen	The antiserum was produced against synthesized peptide derived from human GRF-1 at amino acid range 1071-1120
Immunogen Region	1040-1120
Specificity	ARHGAP35 polyclonal antibody (Rho Gtpase-Activating Protein 35) binds to endogenous Rho Gtpase-Activating Protein 35 at the amino acid region 1040-1120.
Immunogen Sequence	



Immunohistochemistry analysis of paraffin-embedded human brain tissue, using GRF-1 Antibody. The picture on the right is blocked with the synthesized peptide.