

Anti-GRB2 antibody (110-190 Internal) (STJ93421)

STJ93421

GENERAL INFORMATION

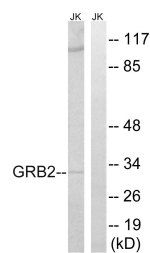
Product Type	Primary antibodies
Short Description	Rabbit polyclonal antibody anti-Growth Factor Receptor-Bound Protein 2 (110-190 Internal) is suitable for use in Western Blot and ELISA research applications.
Applications	WB, ELISA
Host/Source	Rabbit
Reactivity	Human, Mouse, Rat

PRODUCT PROPERTIES

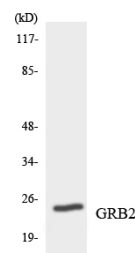
Clonality	Polyclonal
Clone ID	
Concentration	1 mg/mL
Conjugation	Unconjugated
Purification	The antibody was affinity-purified from rabbit anti-serum by affinity-chromatography.
Dilution Range	WB 1:500-1:2000 ELISA 1:40000
Formulation	PBS, 50% Glycerol, 0.5% BSA and 0.02% Sodium Azide.
Isotype	IgG
Storage Instruction	Store at -20°C for up to 1 year from the date of receipt, and avoid repeat freeze-thaw cycles.

TARGET INFORMATION

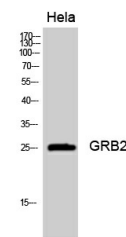
Gene ID	2885
Gene Symbol	GRB2
Uniprot ID	GRB2_HUMAN
Immunogen	The antiserum was produced against synthesized peptide derived from human GRB2 at amino acid range 141-190
Immunogen Region	110-190 Internal
Specificity	GRB2 polyclonal antibody (Growth Factor Receptor-Bound Protein 2) binds to endogenous Growth Factor Receptor-Bound Protein 2 at the amino acid region 110-190 Internal.
Immunogen Sequence	



Western blot analysis of lysates from Jurkat cells, using GRB2 Antibody. The lane on the right is blocked with the synthesized peptide.



Western blot analysis of the lysates from HeLa cells using GRB2 antibody.



Western blot analysis of HeLa cells using GRB2 Polyclonal Antibody diluted at 1: 2000

This product is suitable for in-vitro studies under the RESEARCH USE ONLY [RUO] licence. This product must not be used as for diagnostic or other medical purposes.
St John's Laboratory Ltd, Knowledge Dock Business Centre, University Way, London, E16 2RD | Tel: 0208 223 3081