

Anti-GRB14 antibody (50-130 Internal) (STJ93420)

STJ93420

GENERAL INFORMATION

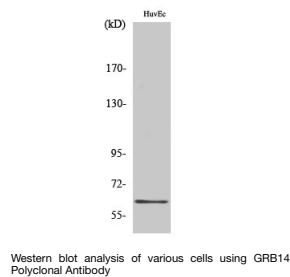
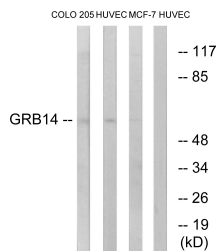
Product Type	Primary antibodies
Short Description	Rabbit polyclonal antibody anti-Growth Factor Receptor-Bound Protein 14 (50-130 Internal) is suitable for use in Western Blot, Immunohistochemistry, Immunofluorescence and ELISA research applications.
Applications	WB, IHC-P, IF-P, ELISA
Host/Source	Rabbit
Reactivity	Human, Mouse, Rat

PRODUCT PROPERTIES

Clonality	Polyclonal
Clone ID	
Concentration	1 mg/mL
Conjugation	Unconjugated
Purification	The antibody was affinity-purified from rabbit anti-serum by affinity-chromatography.
Dilution Range	WB 1:500-1:2000 IHC 1:100-1:300 ELISA 1:40000
Formulation	PBS, 50% Glycerol, 0.5% BSA and 0.02% Sodium Azide.
Isotype	IgG
Storage Instruction	Store at -20°C for up to 1 year from the date of receipt, and avoid repeat freeze-thaw cycles.

TARGET INFORMATION

Gene ID	2888
Gene Symbol	GRB14
Uniprot ID	GRB14_HUMAN
Immunogen	The antiserum was produced against synthesized peptide derived from human GRB14 at amino acid range 81-130
Immunogen Region	50-130 Internal
Specificity	GRB14 polyclonal antibody (Growth Factor Receptor-Bound Protein 14) binds to endogenous Growth Factor Receptor-Bound Protein 14 at the amino acid region 50-130 Internal.
Immunogen Sequence	



This product is suitable for in-vitro studies under the RESEARCH USE ONLY [RUO] licence. This product must not be used as for diagnostic or other medical purposes.
 St John's Laboratory Ltd, Knowledge Dock Business Centre, University Way, London, E16 2RD | Tel: 0208 223 3081