

## Anti-GORASP2 antibody (150-230 Internal) (STJ93418)

STJ93418

### GENERAL INFORMATION

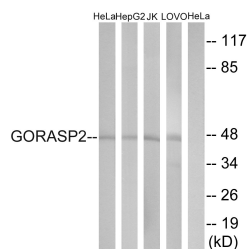
<b>Product Type</b>	Primary antibodies
<b>Short Description</b>	Rabbit polyclonal antibody anti-Golgi Reassembly-Stacking Protein 2 (150-230 Internal) is suitable for use in Western Blot, Immunohistochemistry, Immunofluorescence and ELISA research applications.
<b>Applications</b>	WB, IHC-P, IF-P, ELISA
<b>Host/Source</b>	Rabbit
<b>Reactivity</b>	Human, Mouse, Rat

### PRODUCT PROPERTIES

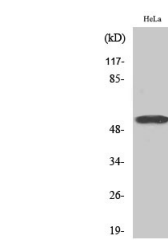
<b>Clonality</b>	Polyclonal
<b>Clone ID</b>	
<b>Concentration</b>	1 mg/mL
<b>Conjugation</b>	Unconjugated
<b>Purification</b>	The antibody was affinity-purified from rabbit anti-serum by affinity-chromatography.
<b>Dilution Range</b>	WB 1:500-1:2000 IHC 1:100-1:300 ELISA 1:40000
<b>Formulation</b>	PBS, 50% Glycerol, 0.5% BSA and 0.02% Sodium Azide.
<b>Isotype</b>	IgG
<b>Storage Instruction</b>	Store at -20°C for up to 1 year from the date of receipt, and avoid repeat freeze-thaw cycles.

### TARGET INFORMATION

<b>Gene ID</b>	26003
<b>Gene Symbol</b>	GORASP2
<b>Uniprot ID</b>	GORS2_HUMAN
<b>Immunogen</b>	The antiserum was produced against synthesized peptide derived from human GORASP2 at amino acid range 181-230
<b>Immunogen Region</b>	150-230 Internal
<b>Specificity</b>	GORASP2 polyclonal antibody (Golgi Reassembly-Stacking Protein 2) binds to endogenous Golgi Reassembly-Stacking Protein 2 at the amino acid region 150-230 Internal.
<b>Immunogen Sequence</b>	



Western blot analysis of lysates from HeLa, HepG2, Jurkat, and LOVO cells, using GORASP2 Antibody. The lane on the right is blocked with the synthesized peptide.



Western blot analysis of various cells using GRASP55 Polyclonal Antibody