

Anti-SYTL4 antibody (350-430 Internal) (STJ93412)

STJ93412

GENERAL INFORMATION

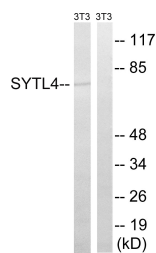
Product Type	Primary antibodies
Short Description	Rabbit polyclonal antibody anti-Synaptotagmin-Like Protein 4 (350-430 Internal) is suitable for use in Western Blot and ELISA research applications.
Applications	WB, ELISA
Host/Source	Rabbit
Reactivity	Human, Mouse, Rat

PRODUCT PROPERTIES

Clonality	Polyclonal
Clone ID	
Concentration	1 mg/mL
Conjugation	Unconjugated
Purification	The antibody was affinity-purified from rabbit anti-serum by affinity-chromatography.
Dilution Range	WB 1:500-1:2000 ELISA 1:40000
Formulation	PBS, 50% Glycerol, 0.5% BSA and 0.02% Sodium Azide.
Isotype	IgG
Storage	Store at -20°C for up to 1 year from the date of receipt, and avoid repeat freeze-thaw cycles.
Instruction	

TARGET INFORMATION

Gene ID	94121
Gene Symbol	SYTL4
Uniprot ID	SYTL4_HUMAN
Immunogen	The antiserum was produced against synthesized peptide derived from human SYTL4 at amino acid range 381-430
Immunogen Region	350-430 Internal
Specificity	SYTL4 polyclonal antibody (Synaptotagmin-Like Protein 4) binds to endogenous Synaptotagmin-Like Protein 4 at the amino acid region 350-430 Internal.
Immunogen Sequence	



Western blot analysis of lysates from NIH/3T3 cells, using SYTL4 Antibody. The lane on the right is blocked with the synthesized peptide.

This product is suitable for in-vitro studies under the RESEARCH USE ONLY [RUO] licence. This product must not be used as for diagnostic or other medical purposes.
St John's Laboratory Ltd, Knowledge Dock Business Centre, University Way, London, E16 2RD | Tel: 0208 223 3081