

Anti-GPS2 antibody (30-110 N-Term) (STJ93406)

STJ93406

GENERAL INFORMATION

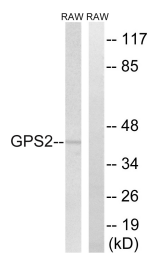
Product Type	Primary antibodies
Short Description	Rabbit polyclonal antibody anti-G Protein Pathway Suppressor 2 (30-110 N-Term) is suitable for use in Western Blot and ELISA research applications.
Applications	WB, ELISA
Host/Source	Rabbit
Reactivity	Human, Mouse, Rat

PRODUCT PROPERTIES

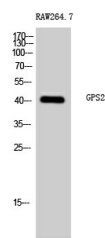
Clonality	Polyclonal
Clone ID	
Concentration	1 mg/mL
Conjugation	Unconjugated
Purification	The antibody was affinity-purified from rabbit anti-serum by affinity-chromatography.
Dilution Range	WB 1:500-1:2000 ELISA 1:40000
Formulation	PBS, 50% Glycerol, 0.5% BSA and 0.02% Sodium Azide.
Isotype	IgG
Storage	Store at -20°C for up to 1 year from the date of receipt, and avoid repeat freeze-thaw cycles.
Instruction	

TARGET INFORMATION

Gene ID	2874
Gene Symbol	GPS2
Uniprot ID	GPS2_HUMAN
Immunogen	The antiserum was produced against synthesized peptide derived from human GPS2 at amino acid range 11-60
Immunogen Region	30-110 N-Term
Specificity	GPS2 polyclonal antibody (G Protein Pathway Suppressor 2) binds to endogenous G Protein Pathway Suppressor 2 at the amino acid region 30-110 N-Term.
Immunogen Sequence	



Western blot analysis of lysates from RAW264.7 cells, using GPS2 Antibody. The lane on the right is blocked with the synthesized peptide.



Western blot analysis of RAW264.7 cells using GPS2 Polyclonal Antibody cells nucleus extracted by Minute™ Cytoplasmic and Nuclear Fractionation kit (SC-003, Inventiotech, MN, USA).

This product is suitable for in-vitro studies under the RESEARCH USE ONLY [RUO] licence. This product must not be used as for diagnostic or other medical purposes.
St John's Laboratory Ltd, Knowledge Dock Business Centre, University Way, London, E16 2RD | Tel: 0208 223 3081