

Anti-GPRC5C antibody (30-110 Internal) (STJ93403)

STJ93403

GENERAL INFORMATION

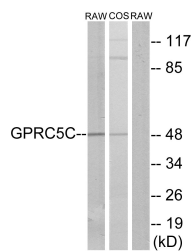
Product Type	Primary antibodies
Short Description	Rabbit polyclonal antibody anti-G-Protein Coupled Receptor Family C Group 5 Member C (30-110 Internal) is suitable for use in Western Blot, Immunofluorescence, Immunocytochemistry and ELISA research applications.
Applications	WB, IF, ICC, ELISA
Host/Source	Rabbit
Reactivity	Human, Mouse, Rat, Monkey

PRODUCT PROPERTIES

Clonality	Polyclonal
Clone ID	
Concentration	1 mg/mL
Conjugation	Unconjugated
Purification	The antibody was affinity-purified from rabbit anti-serum by affinity-chromatography.
Dilution Range	WB 1:500-1:2000 IF 1:200-1:1000 ELISA 1:5000
Formulation	PBS, 50% Glycerol, 0.5% BSA and 0.02% Sodium Azide.
Isotype	IgG
Storage Instruction	Store at -20°C for up to 1 year from the date of receipt, and avoid repeat freeze-thaw cycles.

TARGET INFORMATION

Gene ID	55890
Gene Symbol	GPRC5C
Uniprot ID	GPC5C_HUMAN
Immunogen Region	The antiserum was produced against synthesized peptide derived from human GPRC5C at amino acid range 51-100 30-110 Internal
Specificity	GPRC5C polyclonal antibody (G-Protein Coupled Receptor Family C Group 5 Member C) binds to endogenous G-Protein Coupled Receptor Family C Group 5 Member C at the amino acid region 30-110 Internal.
Immunogen Sequence	



Western blot analysis of lysates from RAW264.7 and COS7 cells, using GPRC5C Antibody. The lane on the right is blocked with the synthesized peptide.