

## Anti-GPRC5B antibody (30-110 Internal) (STJ93402)

STJ93402

### GENERAL INFORMATION

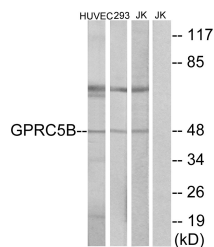
<b>Product Type</b>	Primary antibodies
<b>Short Description</b>	Rabbit polyclonal antibody anti-G-Protein Coupled Receptor Family C Group 5 Member B (30-110 Internal) is suitable for use in Western Blot, Immunofluorescence, Immunocytochemistry and ELISA research applications.
<b>Applications</b>	WB, IF, ICC, ELISA
<b>Host/Source</b>	Rabbit
<b>Reactivity</b>	Human, Rat, Mouse

### PRODUCT PROPERTIES

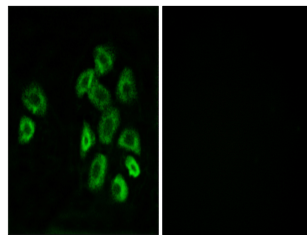
<b>Clonality</b>	Polyclonal
<b>Clone ID</b>	
<b>Concentration</b>	1 mg/mL
<b>Conjugation</b>	Unconjugated
<b>Purification</b>	The antibody was affinity-purified from rabbit anti-serum by affinity-chromatography.
<b>Dilution Range</b>	WB 1:500-1:2000 IF 1:200-1:1000 ELISA 1:5000
<b>Formulation</b>	PBS, 50% Glycerol, 0.5% BSA and 0.02% Sodium Azide.
<b>Isotype</b>	IgG
<b>Storage Instruction</b>	Store at -20°C for up to 1 year from the date of receipt, and avoid repeat freeze-thaw cycles.

### TARGET INFORMATION

<b>Gene ID</b>	51704
<b>Gene Symbol</b>	GPRC5B
<b>Uniprot ID</b>	GPC5B_HUMAN
<b>Immunogen Region</b>	The antiserum was produced against synthesized peptide derived from human GPRC5B at amino acid range 61-110 30-110 Internal
<b>Specificity</b>	GPRC5B polyclonal antibody (G-Protein Coupled Receptor Family C Group 5 Member B) binds to endogenous G-Protein Coupled Receptor Family C Group 5 Member B at the amino acid region 30-110 Internal.
<b>Immunogen Sequence</b>	



Western blot analysis of lysates from Jurkat, HUVEC, and 293 cells, using GPRC5B Antibody. The lane on the right is blocked with the synthesized peptide.



Immunofluorescence analysis of MCF7 cells, using GPRC5B Antibody. The picture on the right is blocked with the synthesized peptide.

This product is suitable for in-vitro studies under the RESEARCH USE ONLY [RUO] licence. This product must not be used as for diagnostic or other medical purposes.  
St John's Laboratory Ltd, Knowledge Dock Business Centre, University Way, London, E16 2RD | Tel: 0208 223 3081