

Anti-LPAR5 antibody (210-290 Internal) (STJ93401)

STJ93401

GENERAL INFORMATION

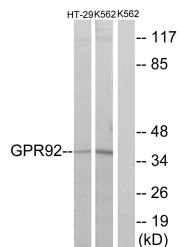
Product Type	Primary antibodies
Short Description	Rabbit polyclonal antibody anti-Lysophosphatidic Acid Receptor 5 (210-290 Internal) is suitable for use in Western Blot, Immunohistochemistry, Immunofluorescence, Immunocytochemistry and ELISA research applications.
Applications	WB, IHC-P, IF, ICC, ELISA
Host/Source	Rabbit
Reactivity	Human, Rat, Mouse

PRODUCT PROPERTIES

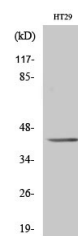
Clonality	Polyclonal
Clone ID	
Concentration	1 mg/mL
Conjugation	Unconjugated
Purification	The antibody was affinity-purified from rabbit anti-serum by affinity-chromatography.
Dilution Range	WB 1:500-1:2000 IHC 1:100-1:300 IF 1:200-1:1000 ELISA 1:5000
Formulation	PBS, 50% Glycerol, 0.5% BSA and 0.02% Sodium Azide.
Isotype	IgG
Storage Instruction	Store at -20°C for up to 1 year from the date of receipt, and avoid repeat freeze-thaw cycles.

TARGET INFORMATION

Gene ID	57121
Gene Symbol	LPAR5
Uniprot ID	LPAR5_HUMAN
Immunogen	The antiserum was produced against synthesized peptide derived from human GPR92 at amino acid range 241-290
Immunogen Region	210-290 Internal
Specificity	LPAR5 polyclonal antibody (Lysophosphatidic Acid Receptor 5) binds to endogenous Lysophosphatidic Acid Receptor 5 at the amino acid region 210-290 Internal.
Immunogen Sequence	



Western blot analysis of lysates from HT-29 and K562 cells, using GPR92 Antibody. The lane on the right is blocked with the synthesized peptide.



Western blot analysis of various cells using GPR92 Polyclonal Antibody diluted at 1: 500

This product is suitable for in-vitro studies under the RESEARCH USE ONLY [RUO] licence. This product must not be used as for diagnostic or other medical purposes.
St John's Laboratory Ltd, Knowledge Dock Business Centre, University Way, London, E16 2RD | Tel: 0208 223 3081