

Anti-GPR85 antibody (150-230 Internal) (STJ93398)

STJ93398

GENERAL INFORMATION

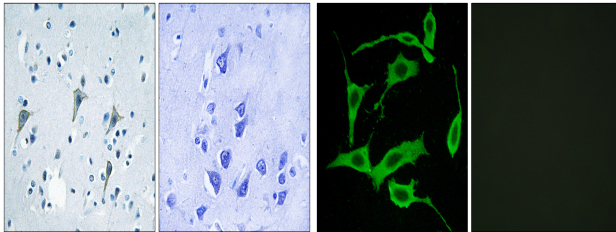
Product Type	Primary antibodies
Short Description	Rabbit polyclonal antibody anti-Probable G-Protein Coupled Receptor 85 (150-230 Internal) is suitable for use in Immunohistochemistry, Immunofluorescence, Immunocytochemistry and ELISA research applications.
Applications	IHC-P, IF, ICC, ELISA
Host/Source	Rabbit
Reactivity	Human, Mouse, Rat

PRODUCT PROPERTIES

Clonality	Polyclonal
Clone ID	
Concentration	1 mg/mL
Conjugation	Unconjugated
Purification	The antibody was affinity-purified from rabbit anti-serum by affinity-chromatography.
Dilution Range	IHC 1:100-1:300 IF 1:200-1:1000 ELISA 1:10000
Formulation	PBS, 50% Glycerol, 0.5% BSA and 0.02% Sodium Azide.
Isotype	IgG
Storage Instruction	Store at -20°C for up to 1 year from the date of receipt, and avoid repeat freeze-thaw cycles.

TARGET INFORMATION

Gene ID	54329
Gene Symbol	GPR85
Uniprot ID	GPR85_HUMAN
Immunogen	The antiserum was produced against synthesized peptide derived from human GPR85 at amino acid range 181-230
Immunogen Region	150-230 Internal
Specificity	GPR85 polyclonal antibody (Probable G-Protein Coupled Receptor 85) binds to endogenous Probable G-Protein Coupled Receptor 85 at the amino acid region 150-230 Internal.
Immunogen Sequence	



Immunohistochemistry analysis of paraffin-embedded human brain tissue, using GPR85 Antibody. The picture on the right is blocked with the synthesized peptide.

Immunofluorescence analysis of LOVO cells, using GPR85 Antibody. The picture on the right is blocked with the synthesized peptide.

This product is suitable for in-vitro studies under the RESEARCH USE ONLY [RUO] licence. This product must not be used as for diagnostic or other medical purposes.
St John's Laboratory Ltd, Knowledge Dock Business Centre, University Way, London, E16 2RD | Tel: 0208 223 3081