

Anti-GPR83 antibody (330-410 C-Term) (STJ93397)

STJ93397

GENERAL INFORMATION

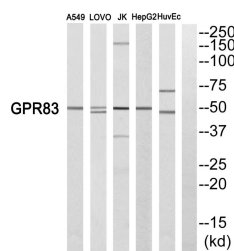
Product Type	Primary antibodies
Short Description	Rabbit polyclonal antibody anti-Probable G-Protein Coupled Receptor 83 (330-410 C-Term) is suitable for use in Western Blot and ELISA research applications.
Applications	WB, ELISA
Host/Source	Rabbit
Reactivity	Human, Rat, Mouse

PRODUCT PROPERTIES

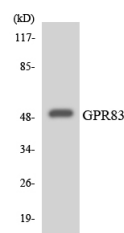
Clonality	Polyclonal
Clone ID	
Concentration	1 mg/mL
Conjugation	Unconjugated
Purification	The antibody was affinity-purified from rabbit anti-serum by affinity-chromatography.
Dilution Range	WB 1:500-1:2000 ELISA 1:5000
Formulation	PBS, 50% Glycerol, 0.5% BSA and 0.02% Sodium Azide.
Isotype	IgG
Storage Instruction	Store at -20°C for up to 1 year from the date of receipt, and avoid repeat freeze-thaw cycles.

TARGET INFORMATION

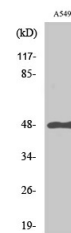
Gene ID	10888
Gene Symbol	GPR83
Uniprot ID	GPR83_HUMAN
Immunogen	The antiserum was produced against synthesized peptide derived from human GPR83 at amino acid range 361-410
Immunogen Region	330-410 C-Term
Specificity	GPR83 polyclonal antibody (Probable G-Protein Coupled Receptor 83) binds to endogenous Probable G-Protein Coupled Receptor 83 at the amino acid region 330-410 C-Term.
Immunogen Sequence	



Western blot analysis of GPR83 Antibody. The lane on the right is blocked with the GPR83 peptide.



Western blot analysis of the lysates from HeLa cells using GPR83 antibody.



Western blot analysis of various cells using GPR83 Polyclonal Antibody

This product is suitable for in-vitro studies under the RESEARCH USE ONLY [RUO] licence. This product must not be used as for diagnostic or other medical purposes.
St John's Laboratory Ltd, Knowledge Dock Business Centre, University Way, London, E16 2RD | Tel: 0208 223 3081