

Anti-GPR68 antibody (250-330 C-Term) (STJ93394)

STJ93394

GENERAL INFORMATION

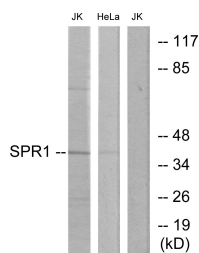
Product Type	Primary antibodies
Short Description	Rabbit polyclonal antibody anti-Ovarian Cancer G-Protein Coupled Receptor 1 (250-330 C-Term) is suitable for use in Western Blot, Immunofluorescence, Immunocytochemistry and ELISA research applications.
Applications	WB, IF, ICC, ELISA
Host/Source	Rabbit
Reactivity	Human, Mouse

PRODUCT PROPERTIES

Clonality	Polyclonal
Clone ID	
Concentration	1 mg/mL
Conjugation	Unconjugated
Purification	The antibody was affinity-purified from rabbit anti-serum by affinity-chromatography.
Dilution Range	WB 1:500-1:2000 IF 1:200-1:1000 ELISA 1:5000
Formulation	PBS, 50% Glycerol, 0.5% BSA and 0.02% Sodium Azide.
Isotype	IgG
Storage Instruction	Store at -20°C for up to 1 year from the date of receipt, and avoid repeat freeze-thaw cycles.

TARGET INFORMATION

Gene ID	8111
Gene Symbol	GPR68
Uniprot ID	OGR1_HUMAN
Immunogen Region	The antiserum was produced against synthesized peptide derived from human SPR1 at amino acid range 281-330
Immunogen Region	250-330 C-Term
Specificity	GPR68 polyclonal antibody (Ovarian Cancer G-Protein Coupled Receptor 1) binds to endogenous Ovarian Cancer G-Protein Coupled Receptor 1 at the amino acid region 250-330 C-Term.
Immunogen Sequence	



Western blot analysis of lysates from Jurkat and HeLa cells, using SPR1 Antibody. The lane on the right is blocked with the synthesized peptide.