

## Anti-GPR63 antibody (340-420 C-Term) (STJ93393)

STJ93393

### GENERAL INFORMATION

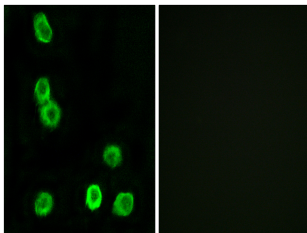
<b>Product Type</b>	Primary antibodies
<b>Short Description</b>	Rabbit polyclonal antibody anti-Probable G-Protein Coupled Receptor 63 (340-420 C-Term) is suitable for use in Immunofluorescence, Immunocytochemistry and ELISA research applications.
<b>Applications</b>	IF, ICC, ELISA
<b>Host/Source</b>	Rabbit
<b>Reactivity</b>	Human, Mouse

### PRODUCT PROPERTIES

<b>Clonality</b>	Polyclonal
<b>Clone ID</b>	
<b>Concentration</b>	1 mg/mL
<b>Conjugation</b>	Unconjugated
<b>Purification</b>	The antibody was affinity-purified from rabbit anti-serum by affinity-chromatography.
<b>Dilution Range</b>	IF 1:200-1:1000 ELISA 1:20000
<b>Formulation</b>	PBS, 50% Glycerol, 0.5% BSA and 0.02% Sodium Azide.
<b>Isotype</b>	IgG
<b>Storage</b>	Store at -20°C for up to 1 year from the date of receipt, and avoid repeat freeze-thaw cycles.
<b>Instruction</b>	

### TARGET INFORMATION

<b>Gene ID</b>	81491
<b>Gene Symbol</b>	GPR63
<b>Uniprot ID</b>	GPR63_HUMAN
<b>Immunogen</b>	The antiserum was produced against synthesized peptide derived from human GPR63 at amino acid range 370-419
<b>Immunogen Region</b>	340-420 C-Term
<b>Specificity</b>	GPR63 polyclonal antibody (Probable G-Protein Coupled Receptor 63) binds to endogenous Probable G-Protein Coupled Receptor 63 at the amino acid region 340-420 C-Term.
<b>Immunogen Sequence</b>	



Immunofluorescence analysis of MCF7 cells, using GPR63 Antibody. The picture on the right is blocked with the synthesized peptide.