

Anti-GPR52 antibody (270-350 C-Term) (STJ93390)

STJ93390

GENERAL INFORMATION

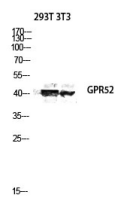
Product Type	Primary antibodies
Short Description	Rabbit polyclonal antibody anti-G-Protein Coupled Receptor 52 (270-350 C-Term) is suitable for use in Western Blot and ELISA research applications.
Applications	WB, ELISA
Host/Source	Rabbit
Reactivity	Human, Rat, Mouse

PRODUCT PROPERTIES

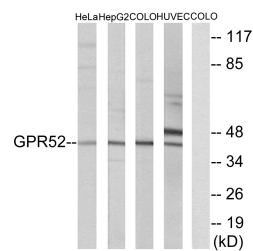
Clonality	Polyclonal
Clone ID	
Concentration	1 mg/mL
Conjugation	Unconjugated
Purification	The antibody was affinity-purified from rabbit anti-serum by affinity-chromatography.
Dilution Range	WB 1:500-1:2000 ELISA 1:10000
Formulation	PBS, 50% Glycerol, 0.5% BSA and 0.02% Sodium Azide.
Isotype	IgG
Storage Instruction	Store at -20°C for up to 1 year from the date of receipt, and avoid repeat freeze-thaw cycles.

TARGET INFORMATION

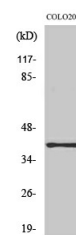
Gene ID	9293
Gene Symbol	GPR52
Uniprot ID	GPR52_HUMAN
Immunogen	The antiserum was produced against synthesized peptide derived from human GPR52 at amino acid range 311-360
Immunogen Region	270-350 C-Term
Specificity	GPR52 polyclonal antibody (G-Protein Coupled Receptor 52) binds to endogenous G-Protein Coupled Receptor 52 at the amino acid region 270-350 C-Term.
Immunogen Sequence	



Western blot analysis of 293T 3T3 lysis using GPR52 antibody. Antibody was diluted at 1:2000



Western blot analysis of lysates from COLO, HUVEC, HeLa, and HepG2 cells, using GPR52 Antibody. The lane on the right is blocked with the synthesized peptide.



Western blot analysis of various cells using GPR52 Polyclonal Antibody diluted at 1: 2000