

## Anti-GPR50 antibody (270-350 Internal) (STJ93389)

STJ93389

### GENERAL INFORMATION

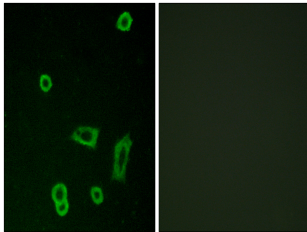
|                          |   |
|--------------------------|---|
| <b>Product Type</b>      | Primary antibodies  |
| <b>Short Description</b> | Rabbit polyclonal antibody anti-Melatonin-Related Receptor (270-350 Internal) is suitable for use in Western Blot, Immunofluorescence, Immunocytochemistry and ELISA research applications. |
| <b>Applications</b>      | WB, IF, ICC, ELISA  |
| <b>Host/Source</b>       | Rabbit  |
| <b>Reactivity</b>        | Human, Rat, Mouse   |

### PRODUCT PROPERTIES

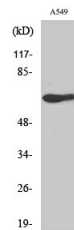
|                            |  |
|----------------------------|--|
| <b>Clonality</b>           | Polyclonal   |
| <b>Clone ID</b>            |  |
| <b>Concentration</b>       | 1 mg/mL  |
| <b>Conjugation</b>         | Unconjugated   |
| <b>Purification</b>        | The antibody was affinity-purified from rabbit anti-serum by affinity-chromatography.          |
| <b>Dilution Range</b>      | WB 1:500-1:2000<br>IF 1:200-1:1000<br>ELISA 1:10000  |
| <b>Formulation</b>         | PBS, 50% Glycerol, 0.5% BSA and 0.02% Sodium Azide.  |
| <b>Isotype</b>             | IgG  |
| <b>Storage Instruction</b> | Store at -20°C for up to 1 year from the date of receipt, and avoid repeat freeze-thaw cycles. |

### TARGET INFORMATION

|                           |  |
|---------------------------|--|
| <b>Gene ID</b>            | 9248   |
| <b>Gene Symbol</b>        | GPR50  |
| <b>Uniprot ID</b>         | MTR1L_HUMAN  |
| <b>Immunogen</b>          | The antiserum was produced against synthesized peptide derived from human MTR1L at amino acid range 301-350                                      |
| <b>Immunogen Region</b>   | 270-350 Internal   |
| <b>Specificity</b>        | GPR50 polyclonal antibody (Melatonin-Related Receptor) binds to endogenous Melatonin-Related Receptor at the amino acid region 270-350 Internal. |
| <b>Immunogen Sequence</b> |  |



Immunofluorescence analysis of LOVO cells, using MTR1L Antibody. The picture on the right is blocked with the synthesized peptide.



Western blot analysis of various cells using GPR50 Polyclonal Antibody diluted at 1: 1000

This product is suitable for in-vitro studies under the RESEARCH USE ONLY [RUO] licence. This product must not be used as for diagnostic or other medical purposes.  
St John's Laboratory Ltd, Knowledge Dock Business Centre, University Way, London, E16 2RD | Tel: 0208 223 3081