

## Anti-LGR4 antibody (430-510 Internal) (STJ93388)

STJ93388

### GENERAL INFORMATION

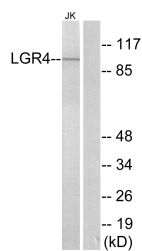
<b>Product Type</b>	Primary antibodies
<b>Short Description</b>	Rabbit polyclonal antibody anti-Leucine-Rich Repeat-Containing G-Protein Coupled Receptor 4 (430-510 Internal) is suitable for use in Western Blot, Immunofluorescence, Immunocytochemistry and ELISA research applications.
<b>Applications</b>	WB, IF, ICC, ELISA
<b>Host/Source</b>	Rabbit
<b>Reactivity</b>	Human, Rat, Mouse

### PRODUCT PROPERTIES

<b>Clonality</b>	Polyclonal
<b>Clone ID</b>	
<b>Concentration</b>	1 mg/mL
<b>Conjugation</b>	Unconjugated
<b>Purification</b>	The antibody was affinity-purified from rabbit anti-serum by affinity-chromatography.
<b>Dilution Range</b>	WB 1:500-1:2000 IF 1:200-1:1000 ELISA 1:5000
<b>Formulation</b>	PBS, 50% Glycerol, 0.5% BSA and 0.02% Sodium Azide.
<b>Isotype</b>	IgG
<b>Storage Instruction</b>	Store at -20°C for up to 1 year from the date of receipt, and avoid repeat freeze-thaw cycles.

### TARGET INFORMATION

<b>Gene ID</b>	55366
<b>Gene Symbol</b>	LGR4
<b>Uniprot ID</b>	LGR4_HUMAN
<b>Immunogen Region</b>	The antiserum was produced against synthesized peptide derived from human LGR4 at amino acid range 461-510
<b>Immunogen Region</b>	430-510 Internal
<b>Specificity</b>	LGR4 polyclonal antibody (Leucine-Rich Repeat-Containing G-Protein Coupled Receptor 4) binds to endogenous Leucine-Rich Repeat-Containing G-Protein Coupled Receptor 4 at the amino acid region 430-510 Internal.
<b>Immunogen Sequence</b>	



Western blot analysis of lysates from Jurkat cells, using LGR4 Antibody. The lane on the right is blocked with the synthesized peptide.