

Anti-GPR42 antibody (20-100 N-Term) (STJ93386)

STJ93386

GENERAL INFORMATION

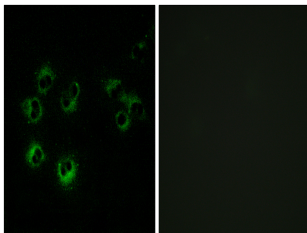
Product Type	Primary antibodies
Short Description	Rabbit polyclonal antibody anti-G-Protein Coupled Receptor 42 (20-100 N-Term) is suitable for use in Immunofluorescence, Immunocytochemistry and ELISA research applications.
Applications	IF, ICC, ELISA
Host/Source	Rabbit
Reactivity	Human, Rat, Mouse

PRODUCT PROPERTIES

Clonality	Polyclonal
Clone ID	
Concentration	1 mg/mL
Conjugation	Unconjugated
Purification	The antibody was affinity-purified from rabbit anti-serum by affinity-chromatography.
Dilution Range	IF 1:200-1:1000 ELISA 1:20000
Formulation	PBS, 50% Glycerol, 0.5% BSA and 0.02% Sodium Azide.
Isotype	IgG
Storage	Store at -20°C for up to 1 year from the date of receipt, and avoid repeat freeze-thaw cycles.
Instruction	

TARGET INFORMATION

Gene ID	2866
Gene Symbol	GPR42
Uniprot ID	GPR42_HUMAN
Immunogen	The antiserum was produced against synthesized peptide derived from human GPR42 at amino acid range 12-61
Immunogen Region	20-100 N-Term
Specificity	GPR42 polyclonal antibody (G-Protein Coupled Receptor 42) binds to endogenous G-Protein Coupled Receptor 42 at the amino acid region 20-100 N-Term.
Immunogen Sequence	



Immunofluorescence analysis of MCF-7 cells, using GPR42 Antibody. The picture on the right is blocked with the synthesized peptide.