

Anti-GPR35 antibody (30-110 Internal) (STJ93380)

STJ93380

GENERAL INFORMATION

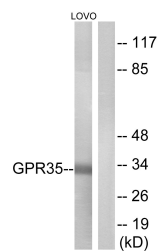
Product Type	Primary antibodies
Short Description	Rabbit polyclonal antibody anti-G-Protein Coupled Receptor 35 (30-110 Internal) is suitable for use in Western Blot, Immunofluorescence, Immunocytochemistry and ELISA research applications.
Applications	WB, IF, ICC, ELISA
Host/Source	Rabbit
Reactivity	Human, Rat, Mouse

PRODUCT PROPERTIES

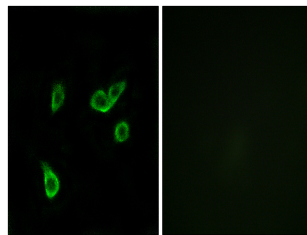
Clonality	Polyclonal
Clone ID	
Concentration	1 mg/mL
Conjugation	Unconjugated
Purification	The antibody was affinity-purified from rabbit anti-serum by affinity-chromatography.
Dilution Range	WB 1:500-1:2000 IF 1:200-1:1000 ELISA 1:20000
Formulation	PBS, 50% Glycerol, 0.5% BSA and 0.02% Sodium Azide.
Isotype	IgG
Storage Instruction	Store at -20°C for up to 1 year from the date of receipt, and avoid repeat freeze-thaw cycles.

TARGET INFORMATION

Gene ID	2859
Gene Symbol	GPR35
Uniprot ID	GPR35_HUMAN
Immunogen	The antiserum was produced against synthesized peptide derived from human GPR35 at amino acid range 51-100
Immunogen Region	30-110 Internal
Specificity	GPR35 polyclonal antibody (G-Protein Coupled Receptor 35) binds to endogenous G-Protein Coupled Receptor 35 at the amino acid region 30-110 Internal.
Immunogen Sequence	



Western blot analysis of lysates from LOVO cells, using GPR35 Antibody. The lane on the right is blocked with the synthesized peptide.



Immunofluorescence analysis of A549 cells, using GPR35 Antibody. The picture on the right is blocked with the synthesized peptide.