

Anti-GPR25 antibody (180-260 Internal) (STJ93375)

STJ93375

GENERAL INFORMATION

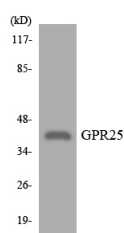
Product Type	Primary antibodies
Short Description	Rabbit polyclonal antibody anti-Probable G-Protein Coupled Receptor 25 (180-260 Internal) is suitable for use in Western Blot and ELISA research applications.
Applications	WB, ELISA
Host/Source	Rabbit
Reactivity	Human, Rat, Mouse

PRODUCT PROPERTIES

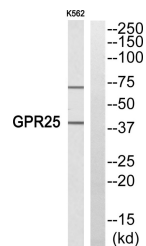
Clonality	Polyclonal
Clone ID	
Concentration	1 mg/mL
Conjugation	Unconjugated
Purification	The antibody was affinity-purified from rabbit anti-serum by affinity-chromatography.
Dilution Range	WB 1:500-1:2000 ELISA 1:5000
Formulation	PBS, 50% Glycerol, 0.5% BSA and 0.02% Sodium Azide.
Isotype	IgG
Storage Instruction	Store at -20°C for up to 1 year from the date of receipt, and avoid repeat freeze-thaw cycles.

TARGET INFORMATION

Gene ID	2848
Gene Symbol	GPR25
Uniprot ID	GPR25_HUMAN
Immunogen	The antiserum was produced against synthesized peptide derived from human GPR25 at amino acid range 193-242
Immunogen Region	180-260 Internal
Specificity	GPR25 polyclonal antibody (Probable G-Protein Coupled Receptor 25) binds to endogenous Probable G-Protein Coupled Receptor 25 at the amino acid region 180-260 Internal.
Immunogen Sequence	



Western blot analysis of the lysates from K562 cells using GPR25 antibody.



Western blot analysis of GPR25 Antibody. The lane on the right is blocked with the GPR25 peptide.

This product is suitable for in-vitro studies under the RESEARCH USE ONLY [RUO] licence. This product must not be used as for diagnostic or other medical purposes.
 St John's Laboratory Ltd, Knowledge Dock Business Centre, University Way, London, E16 2RD | Tel: 0208 223 3081