

Anti-GPR22 antibody (240-320 Internal) (STJ93374)

STJ93374

GENERAL INFORMATION

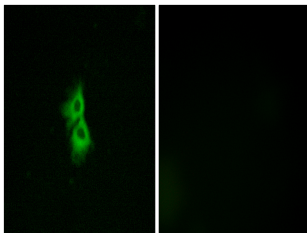
Product Type	Primary antibodies
Short Description	Rabbit polyclonal antibody anti-G-Protein Coupled Receptor 22 (240-320 Internal) is suitable for use in Immunofluorescence, Immunocytochemistry and ELISA research applications.
Applications	IF, ICC, ELISA
Host/Source	Rabbit
Reactivity	Human, Mouse

PRODUCT PROPERTIES

Clonality	Polyclonal
Clone ID	
Concentration	1 mg/mL
Conjugation	Unconjugated
Purification	The antibody was affinity-purified from rabbit anti-serum by affinity-chromatography.
Dilution Range	IF 1:200-1:1000 ELISA 1:5000
Formulation	PBS, 50% Glycerol, 0.5% BSA and 0.02% Sodium Azide.
Isotype	IgG
Storage	Store at -20°C for up to 1 year from the date of receipt, and avoid repeat freeze-thaw cycles.
Instruction	

TARGET INFORMATION

Gene ID	2845
Gene Symbol	GPR22
Uniprot ID	GPR22_HUMAN
Immunogen	The antiserum was produced against synthesized peptide derived from human GPR22 at amino acid range 271-320
Immunogen Region	240-320 Internal
Specificity	GPR22 polyclonal antibody (G-Protein Coupled Receptor 22) binds to endogenous G-Protein Coupled Receptor 22 at the amino acid region 240-320 Internal.
Immunogen Sequence	



Immunofluorescence analysis of MCF7 cells, using GPR22 Antibody. The picture on the right is blocked with the synthesized peptide.