

Anti-GPR18 antibody (100-180 Internal) (STJ93369)

STJ93369

GENERAL INFORMATION

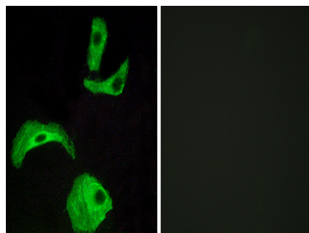
Product Type	Primary antibodies
Short Description	Rabbit polyclonal antibody anti-N-Arachidonyl Glycine Receptor (100-180 Internal) is suitable for use in Western Blot, Immunofluorescence, Immunocytochemistry and ELISA research applications.
Applications	WB, IF, ICC, ELISA
Host/Source	Rabbit
Reactivity	Human, Rat, Mouse

PRODUCT PROPERTIES

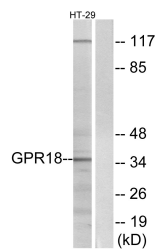
Clonality	Polyclonal
Clone ID	
Concentration	1 mg/mL
Conjugation	Unconjugated
Purification	The antibody was affinity-purified from rabbit anti-serum by affinity-chromatography.
Dilution Range	WB 1:500-1:2000 IF 1:200-1:1000 ELISA 1:40000
Formulation	PBS, 50% Glycerol, 0.5% BSA and 0.02% Sodium Azide.
Isotype	IgG
Storage Instruction	Store at -20°C for up to 1 year from the date of receipt, and avoid repeat freeze-thaw cycles.

TARGET INFORMATION

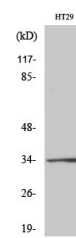
Gene ID	2841
Gene Symbol	GPR18
Uniprot ID	GPR18_HUMAN
Immunogen	The antiserum was produced against synthesized peptide derived from human GPR18 at amino acid range 131-180
Immunogen Region	100-180 Internal
Specificity	GPR18 polyclonal antibody (N-Arachidonyl Glycine Receptor) binds to endogenous N-Arachidonyl Glycine Receptor at the amino acid region 100-180 Internal.
Immunogen Sequence	



Immunofluorescence analysis of HeLa cells, using GPR18 Antibody. The picture on the right is blocked with the synthesized peptide.



Western blot analysis of lysates from HT-29 cells, using GPR18 Antibody. The lane on the right is blocked with the synthesized peptide.



Western blot analysis of various cells using GPR18 Polyclonal Antibody

This product is suitable for in-vitro studies under the RESEARCH USE ONLY [RUO] licence. This product must not be used as for diagnostic or other medical purposes.
St John's Laboratory Ltd, Knowledge Dock Business Centre, University Way, London, E16 2RD | Tel: 0208 223 3081