

Anti-TPRA1 antibody (170-250 Internal) (STJ93367)

STJ93367

GENERAL INFORMATION

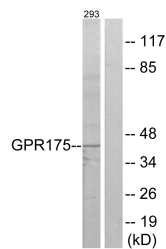
Product Type	Primary antibodies
Short Description	Rabbit polyclonal antibody anti-Transmembrane Protein Adipocyte-Associated 1 (170-250 Internal) is suitable for use in Western Blot, Immunofluorescence, Immunocytochemistry and ELISA research applications.
Applications	WB, IF, ICC, ELISA
Host/Source	Rabbit
Reactivity	Human, Mouse, Rat

PRODUCT PROPERTIES

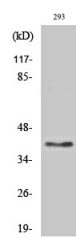
Clonality	Polyclonal
Clone ID	
Concentration	1 mg/mL
Conjugation	Unconjugated
Purification	The antibody was affinity-purified from rabbit anti-serum by affinity-chromatography.
Dilution Range	WB 1:500-1:2000 IF 1:200-1:1000 ELISA 1:20000
Formulation	PBS, 50% Glycerol, 0.5% BSA and 0.02% Sodium Azide.
Isotype	IgG
Storage Instruction	Store at -20°C for up to 1 year from the date of receipt, and avoid repeat freeze-thaw cycles.

TARGET INFORMATION

Gene ID	131601
Gene Symbol	TPRA1
Uniprot ID	TPRA1_HUMAN
Immunogen Region	The antiserum was produced against synthesized peptide derived from human GPR175 at amino acid range 198-247
Immunogen Region	170-250 Internal
Specificity	TPRA1 polyclonal antibody (Transmembrane Protein Adipocyte-Associated 1) binds to endogenous Transmembrane Protein Adipocyte-Associated 1 at the amino acid region 170-250 Internal.
Immunogen Sequence	



Western blot analysis of lysates from 293 cells, using GPR175 Antibody. The lane on the right is blocked with the synthesized peptide.



Western blot analysis of various cells using GPR175 Polyclonal Antibody diluted at 1: 2000