

Anti-GPR174 antibody (100-180 Internal) (STJ93365)

STJ93365

GENERAL INFORMATION

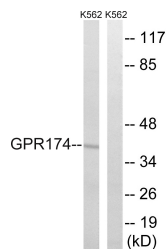
Product Type	Primary antibodies
Short Description	Rabbit polyclonal antibody anti-Probable G-Protein Coupled Receptor 174 (100-180 Internal) is suitable for use in Western Blot, Immunofluorescence, Immunocytochemistry and ELISA research applications.
Applications	WB, IF, ICC, ELISA
Host/Source	Rabbit
Reactivity	Human, Rat, Mouse

PRODUCT PROPERTIES

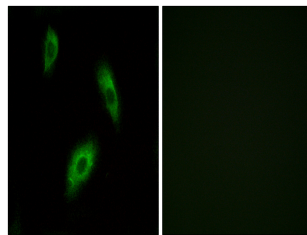
Clonality	Polyclonal
Clone ID	
Concentration	1 mg/mL
Conjugation	Unconjugated
Purification	The antibody was affinity-purified from rabbit anti-serum by affinity-chromatography.
Dilution Range	WB 1:500-1:2000 IF 1:200-1:1000 ELISA 1:40000
Formulation	PBS, 50% Glycerol, 0.5% BSA and 0.02% Sodium Azide.
Isotype	IgG
Storage Instruction	Store at -20°C for up to 1 year from the date of receipt, and avoid repeat freeze-thaw cycles.

TARGET INFORMATION

Gene ID	84636
Gene Symbol	GPR174
Uniprot ID	GP174_HUMAN
Immunogen Region	The antiserum was produced against synthesized peptide derived from human GPR174 at amino acid range 131-180
Immunogen Region	100-180 Internal
Specificity	GPR174 polyclonal antibody (Probable G-Protein Coupled Receptor 174) binds to endogenous Probable G-Protein Coupled Receptor 174 at the amino acid region 100-180 Internal.
Immunogen Sequence	



Western blot analysis of lysates from K562 cells, using GPR174 Antibody. The lane on the right is blocked with the synthesized peptide.



Immunofluorescence analysis of LOVO cells, using GPR174 Antibody. The picture on the right is blocked with the synthesized peptide.