

Anti-SLC52A2 antibody (20-100 Internal) (STJ93360)

STJ93360

GENERAL INFORMATION

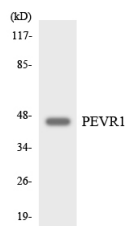
Product Type	Primary antibodies
Short Description	Rabbit polyclonal antibody anti-Solute Carrier Family 52-Riboflavin Transporter-Member 2 (20-100 Internal) is suitable for use in Western Blot, Immunofluorescence, Immunocytochemistry and ELISA research applications.
Applications	WB, IF, ICC, ELISA
Host/Source	Rabbit
Reactivity	Human, Rat, Mouse

PRODUCT PROPERTIES

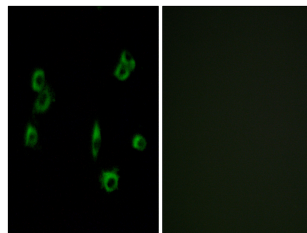
Clonality	Polyclonal
Clone ID	
Concentration	1 mg/mL
Conjugation	Unconjugated
Purification	The antibody was affinity-purified from rabbit anti-serum by affinity-chromatography.
Dilution Range	WB 1:500-1:2000 IF 1:200-1:1000 ELISA 1:10000
Formulation	PBS, 50% Glycerol, 0.5% BSA and 0.02% Sodium Azide.
Isotype	IgG
Storage Instruction	Store at 20°C for up to 1 year from the date of receipt, and avoid repeat freeze-thaw cycles.

TARGET INFORMATION

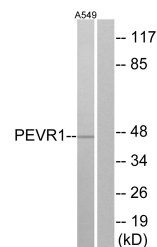
Gene ID	79581
Gene Symbol	SLC52A2
Uniprot ID	S52A2_HUMAN
Immunogen	The antiserum was produced against synthesized peptide derived from human PEVR1 at amino acid range 43-92
Immunogen Region	20-100 Internal
Specificity	SLC52A2 polyclonal antibody (Solute Carrier Family 52-Riboflavin Transporter-Member 2) binds to endogenous Solute Carrier Family 52-Riboflavin Transporter-Member 2 at the amino acid region 20-100 Internal.
Immunogen Sequence	



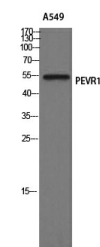
Western blot analysis of the lysates from HepG2 cells using PEVR1 antibody.



Immunofluorescence analysis of MCF7 cells, using PEVR1 Antibody. The picture on the right is blocked with the synthesized peptide.



Western blot analysis of lysates from A549 cells, using PEVR1 Antibody. The lane on the right is blocked with the synthesized peptide.



Western blot analysis of A549 cells using GPR172A Polyclonal Antibody

This product is suitable for in-vitro studies under the RESEARCH USE ONLY [RUO] licence. This product must not be used as for diagnostic or other medical purposes.
St John's Laboratory Ltd, Knowledge Dock Business Centre, University Way, London, E16 2RD | Tel: 0208 223 3081