

Anti-GPR158 antibody (10-90 N-Term) (STJ93354)

STJ93354

GENERAL INFORMATION

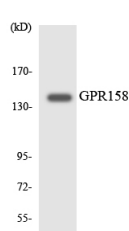
| | |
|--------------------------|----------------------------------------------------------------------------------------------------------------------------------------------------------------------------------------------------------------------------|
| Product Type | Primary antibodies |
| Short Description | Rabbit polyclonal antibody anti-Probable G-Protein Coupled Receptor 158 (10-90 N-Term) is suitable for use in Western Blot, Immunohistochemistry, Immunofluorescence, Immunocytochemistry and ELISA research applications. |
| Applications | WB, IHC-P, IF, ICC, ELISA |
| Host/Source | Rabbit |
| Reactivity | Human, Mouse |

PRODUCT PROPERTIES

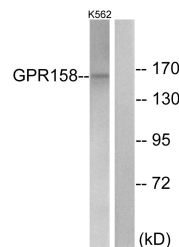
| | |
|----------------------------|------------------------------------------------------------------------------------------------|
| Clonality | Polyclonal |
| Clone ID | |
| Concentration | 1 mg/mL |
| Conjugation | Unconjugated |
| Purification | The antibody was affinity-purified from rabbit anti-serum by affinity-chromatography. |
| Dilution Range | WB 1:500-1:2000 IHC 1:100-1:300 IF 1:200-1:1000 ELISA 1:5000 |
| Formulation | PBS, 50% Glycerol, 0.5% BSA and 0.02% Sodium Azide. |
| Isotype | IgG |
| Storage Instruction | Store at -20°C for up to 1 year from the date of receipt, and avoid repeat freeze-thaw cycles. |

TARGET INFORMATION

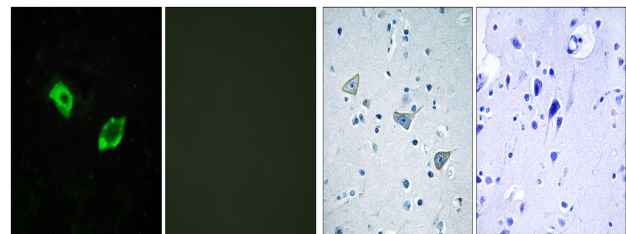
| | |
|---------------------------|-------------------------------------------------------------------------------------------------------------------------------------------------------------------------|
| Gene ID | 57512 |
| Gene Symbol | GPR158 |
| Uniprot ID | GP158_HUMAN |
| Immunogen | The antiserum was produced against synthesized peptide derived from human GPR158 at amino acid range 1-50 |
| Immunogen Region | 10-90 N-Term |
| Specificity | GPR158 polyclonal antibody (Probable G-Protein Coupled Receptor 158) binds to endogenous Probable G-Protein Coupled Receptor 158 at the amino acid region 10-90 N-Term. |
| Immunogen Sequence | |



Western blot analysis of the lysates from HeLa cells using GPR158 antibody.



Western blot analysis of lysates from K562 cells, using GPR158 Antibody. The lane on the right is blocked with the synthesized peptide.



Immunofluorescence analysis of HUVEC cells, using GPR158 Antibody. The picture on the right is blocked with the synthesized peptide.

Immunohistochemistry analysis of paraffin-embedded human brain tissue, using GPR158 Antibody. The picture on the right is blocked with the synthesized peptide.

This product is suitable for in-vitro studies under the RESEARCH USE ONLY [RUO] licence. This product must not be used as for diagnostic or other medical purposes.
St John's Laboratory Ltd, Knowledge Dock Business Centre, University Way, London, E16 2RD | Tel: 0208 223 3081