

Anti-GPR151 antibody (340-420 C-Term) (STJ93347)

STJ93347

GENERAL INFORMATION

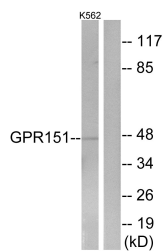
Product Type	Primary antibodies
Short Description	Rabbit polyclonal antibody anti-G-Protein Coupled Receptor 151 (340-420 C-Term) is suitable for use in Western Blot, Immunofluorescence, Immunocytochemistry and ELISA research applications.
Applications	WB, IF, ICC, ELISA
Host/Source	Rabbit
Reactivity	Human, Mouse, Rat

PRODUCT PROPERTIES

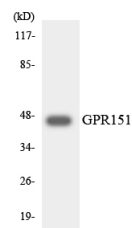
Clonality	Polyclonal
Clone ID	
Concentration	1 mg/mL
Conjugation	Unconjugated
Purification	The antibody was affinity-purified from rabbit anti-serum by affinity-chromatography.
Dilution Range	WB 1:500-1:2000 IF 1:200-1:1000 ELISA 1:5000
Formulation	PBS, 50% Glycerol, 0.5% BSA and 0.02% Sodium Azide.
Isotype	IgG
Storage Instruction	Store at -20°C for up to 1 year from the date of receipt, and avoid repeat freeze-thaw cycles.

TARGET INFORMATION

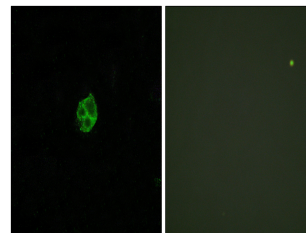
Gene ID	134391
Gene Symbol	GPR151
Uniprot ID	GP151_HUMAN
Immunogen Region	The antiserum was produced against synthesized peptide derived from human GPR151 at amino acid range 370-419
Immunogen Region	340-420 C-Term
Specificity	GPR151 polyclonal antibody (G-Protein Coupled Receptor 151) binds to endogenous G-Protein Coupled Receptor 151 at the amino acid region 340-420 C-Term.
Immunogen Sequence	



Western blot analysis of lysates from K562 cells, using GPR151 Antibody. The lane on the right is blocked with the synthesized peptide.



Western blot analysis of the lysates from HeLa cells using GPR151 antibody.



Immunofluorescence analysis of HUVEC cells, using GPR151 Antibody. The picture on the right is blocked with the synthesized peptide.

This product is suitable for in-vitro studies under the RESEARCH USE ONLY [RUO] licence. This product must not be used as for diagnostic or other medical purposes.
St John's Laboratory Ltd, Knowledge Dock Business Centre, University Way, London, E16 2RD | Tel: 0208 223 3081