

Anti-GPR15 antibody (180-260 Internal) (STJ93343)

STJ93343

GENERAL INFORMATION

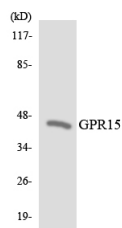
Product Type	Primary antibodies
Short Description	Rabbit polyclonal antibody anti-G-Protein Coupled Receptor 15 (180-260 Internal) is suitable for use in Western Blot, Immunofluorescence, Immunocytochemistry and ELISA research applications.
Applications	WB, IF, ICC, ELISA
Host/Source	Rabbit
Reactivity	Human, Mouse

PRODUCT PROPERTIES

Clonality	Polyclonal
Clone ID	
Concentration	1 mg/mL
Conjugation	Unconjugated
Purification	The antibody was affinity-purified from rabbit anti-serum by affinity-chromatography.
Dilution Range	WB 1:500-1:2000 IF 1:200-1:1000 ELISA 1:10000
Formulation	PBS, 50% Glycerol, 0.5% BSA and 0.02% Sodium Azide.
Isotype	IgG
Storage Instruction	Store at -20°C for up to 1 year from the date of receipt, and avoid repeat freeze-thaw cycles.

TARGET INFORMATION

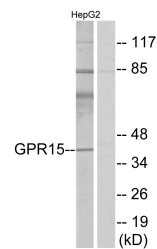
Gene ID	2838
Gene Symbol	GPR15
Uniprot ID	GPR15_HUMAN
Immunogen	The antiserum was produced against synthesized peptide derived from human GPR15 at amino acid range 201-250
Immunogen Region	180-260 Internal
Specificity	GPR15 polyclonal antibody (G-Protein Coupled Receptor 15) binds to endogenous G-Protein Coupled Receptor 15 at the amino acid region 180-260 Internal.
Immunogen Sequence	



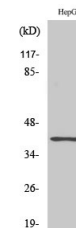
Western blot analysis of the lysates from HeLa cells using GPR15 antibody.



Immunofluorescence analysis of LOVO cells, using GPR15 Antibody. The picture on the right is blocked with the synthesized peptide.



Western blot analysis of lysates from HepG2 cells, using GPR15 Antibody. The lane on the right is blocked with the synthesized peptide.



Western blot analysis of various cells using GPR15 Polyclonal Antibody

This product is suitable for in-vitro studies under the RESEARCH USE ONLY [RUO] licence. This product must not be used as for diagnostic or other medical purposes.
St John's Laboratory Ltd, Knowledge Dock Business Centre, University Way, London, E16 2RD | Tel: 0208 223 3081