

Anti-GPR142 antibody (10-90 N-Term) (STJ93338)

STJ93338

GENERAL INFORMATION

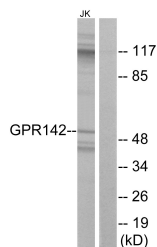
Product Type	Primary antibodies
Short Description	Rabbit polyclonal antibody anti-Probable G-Protein Coupled Receptor 142 (10-90 N-Term) is suitable for use in Western Blot, Immunofluorescence, Immunocytochemistry and ELISA research applications.
Applications	WB, IF, ICC, ELISA
Host/Source	Rabbit
Reactivity	Human, Rat, Mouse

PRODUCT PROPERTIES

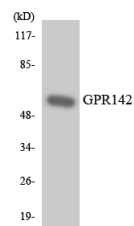
Clonality	Polyclonal
Clone ID	
Concentration	1 mg/mL
Conjugation	Unconjugated
Purification	The antibody was affinity-purified from rabbit anti-serum by affinity-chromatography.
Dilution Range	WB 1:500-1:2000 IF 1:200-1:1000 ELISA 1:10000
Formulation	PBS, 50% Glycerol, 0.5% BSA and 0.02% Sodium Azide.
Isotype	IgG
Storage Instruction	Store at -20°C for up to 1 year from the date of receipt, and avoid repeat freeze-thaw cycles.

TARGET INFORMATION

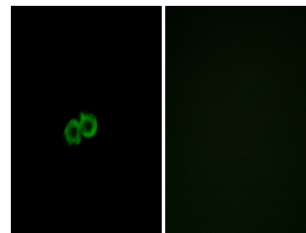
Gene ID	350383
Gene Symbol	GPR142
Uniprot ID	GP142_HUMAN
Immunogen Region	The antiserum was produced against synthesized peptide derived from human GPR142 at amino acid range 1-50
Immunogen Region	10-90 N-Term
Specificity	GPR142 polyclonal antibody (Probable G-Protein Coupled Receptor 142) binds to endogenous Probable G-Protein Coupled Receptor 142 at the amino acid region 10-90 N-Term.
Immunogen Sequence	



Western blot analysis of lysates from Jurkat cells, using GPR142 Antibody. The lane on the right is blocked with the synthesized peptide.



Western blot analysis of the lysates from HeLa cells using GPR142 antibody.



Immunofluorescence analysis of A549 cells, using GPR142 Antibody. The picture on the right is blocked with the synthesized peptide.

This product is suitable for in-vitro studies under the RESEARCH USE ONLY [RUO] licence. This product must not be used as for diagnostic or other medical purposes.
St John's Laboratory Ltd, Knowledge Dock Business Centre, University Way, London, E16 2RD | Tel: 0208 223 3081