

Anti-GPR139 antibody (150-230 Internal) (STJ93337)

STJ93337

GENERAL INFORMATION

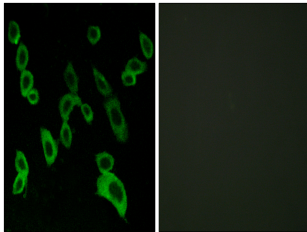
Product Type	Primary antibodies
Short Description	Rabbit polyclonal antibody anti-Probable G-Protein Coupled Receptor 139 (150-230 Internal) is suitable for use in Western Blot, Immunofluorescence, Immunocytochemistry and ELISA research applications.
Applications	WB, IF, ICC, ELISA
Host/Source	Rabbit
Reactivity	Human, Mouse, Rat

PRODUCT PROPERTIES

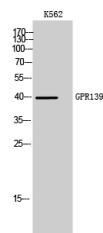
Clonality	Polyclonal
Clone ID	
Concentration	1 mg/mL
Conjugation	Unconjugated
Purification	The antibody was affinity-purified from rabbit anti-serum by affinity-chromatography.
Dilution Range	WB 1:500-1:2000 IF 1:200-1:1000 ELISA 1:5000
Formulation	PBS, 50% Glycerol, 0.5% BSA and 0.02% Sodium Azide.
Isotype	IgG
Storage Instruction	Store at -20°C for up to 1 year from the date of receipt, and avoid repeat freeze-thaw cycles.

TARGET INFORMATION

Gene ID	124274
Gene Symbol	GPR139
Uniprot ID	GP139_HUMAN
Immunogen	The antiserum was produced against synthesized peptide derived from human GPR139 at amino acid range 181-230
Immunogen Region	150-230 Internal
Specificity	GPR139 polyclonal antibody (Probable G-Protein Coupled Receptor 139) binds to endogenous Probable G-Protein Coupled Receptor 139 at the amino acid region 150-230 Internal.
Immunogen Sequence	



Immunofluorescence analysis of LOVO cells, using GPR139 Antibody. The picture on the right is blocked with the synthesized peptide.



Western blot analysis of K562 cells using GPR139 Polyclonal Antibody

This product is suitable for in-vitro studies under the RESEARCH USE ONLY [RUO] licence. This product must not be used as for diagnostic or other medical purposes.
St John's Laboratory Ltd, Knowledge Dock Business Centre, University Way, London, E16 2RD | Tel: 0208 223 3081