

Anti-ADGRA2 antibody (1120-1200 C-Term) (STJ93331)

STJ93331

GENERAL INFORMATION

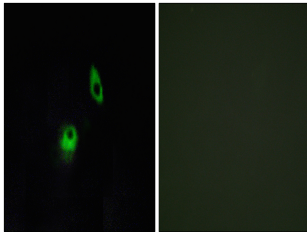
Product Type	Primary antibodies
Short Description	Rabbit polyclonal antibody anti-Adhesion G Protein-Coupled Receptor A2 (1120-1200 C-Term) is suitable for use in Western Blot, Immunofluorescence, Immunocytochemistry and ELISA research applications.
Applications	WB, IF, ICC, ELISA
Host/Source	Rabbit
Reactivity	Human, Mouse

PRODUCT PROPERTIES

Clonality	Polyclonal
Clone ID	
Concentration	1 mg/mL
Conjugation	Unconjugated
Purification	The antibody was affinity-purified from rabbit anti-serum by affinity-chromatography.
Dilution Range	WB 1:500-1:2000 IF 1:200-1:1000 ELISA 1:10000
Formulation	PBS, 50% Glycerol, 0.5% BSA and 0.02% Sodium Azide.
Isotype	IgG
Storage Instruction	Store at -20°C for up to 1 year from the date of receipt, and avoid repeat freeze-thaw cycles.

TARGET INFORMATION

Gene ID	25960
Gene Symbol	ADGRA2
Uniprot ID	AGRA2_HUMAN
Immunogen	The antiserum was produced against synthesized peptide derived from human GPR124 at amino acid range 1151-1200
Immunogen Region	1120-1200 C-Term
Specificity	ADGRA2 polyclonal antibody (Adhesion G Protein-Coupled Receptor A2) binds to endogenous Adhesion G Protein-Coupled Receptor A2 at the amino acid region 1120-1200 C-Term.
Immunogen Sequence	



Immunofluorescence analysis of HeLa cells, using GPR124 Antibody. The picture on the right is blocked with the synthesized peptide.