

Anti-ADGRF5 antibody (30-110 N-Term) (STJ93325)

STJ93325

GENERAL INFORMATION

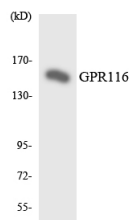
Product Type	Primary antibodies
Short Description	Rabbit polyclonal antibody anti-Adhesion G Protein-Coupled Receptor F5 (30-110 N-Term) is suitable for use in Western Blot, Immunohistochemistry, Immunofluorescence, Immunocytochemistry and ELISA research applications.
Applications	WB, IHC-P, IF, ICC, ELISA
Host/Source	Rabbit
Reactivity	Human, Rat, Mouse

PRODUCT PROPERTIES

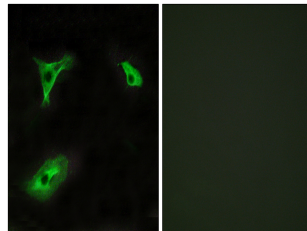
Clonality	Polyclonal
Clone ID	
Concentration	1 mg/mL
Conjugation	Unconjugated
Purification	The antibody was affinity-purified from rabbit anti-serum by affinity-chromatography.
Dilution Range	WB 1:500-1:2000 IHC 1:100-1:300 IF 1:200-1:1000 ELISA 1:5000
Formulation	PBS, 50% Glycerol, 0.5% BSA and 0.02% Sodium Azide.
Isotype	IgG
Storage Instruction	Store at -20°C for up to 1 year from the date of receipt, and avoid repeat freeze-thaw cycles.

TARGET INFORMATION

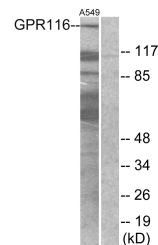
Gene ID	221395
Gene Symbol	ADGRF5
Uniprot ID	AGR5_HUMAN
Immunogen	The antiserum was produced against synthesized peptide derived from human GPR116 at amino acid range 11-60
Immunogen Region	30-110 N-Term
Specificity	ADGRF5 polyclonal antibody (Adhesion G Protein-Coupled Receptor F5) binds to endogenous Adhesion G Protein-Coupled Receptor F5 at the amino acid region 30-110 N-Term.
Immunogen Sequence	



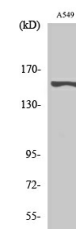
Western blot analysis of the lysates from HeLa cells using GPR116 antibody.



Immunofluorescence analysis of HeLa cells, using GPR116 Antibody. The picture on the right is blocked with the synthesized peptide.



Western blot analysis of lysates from A549 cells, using GPR116 Antibody. The lane on the right is blocked with the synthesized peptide.



Western blot analysis of various cells using GPR116 Polyclonal Antibody diluted at 1: 500

This product is suitable for in-vitro studies under the RESEARCH USE ONLY [RUO] licence. This product must not be used as for diagnostic or other medical purposes.
St John's Laboratory Ltd, Knowledge Dock Business Centre, University Way, London, E16 2RD | Tel: 0208 223 3081