

Anti-ADGRF4 antibody (620-700 C-Term) (STJ93324)

STJ93324

GENERAL INFORMATION

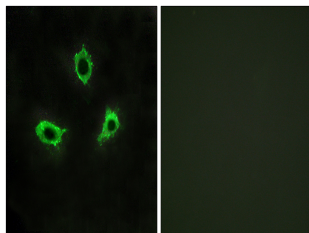
Product Type	Primary antibodies
Short Description	Rabbit polyclonal antibody anti-Adhesion G Protein-Coupled Receptor F4 (620-700 C-Term) is suitable for use in Western Blot, Immunofluorescence, Immunocytochemistry and ELISA research applications.
Applications	WB, IF, ICC, ELISA
Host/Source	Rabbit
Reactivity	Human, Mouse

PRODUCT PROPERTIES

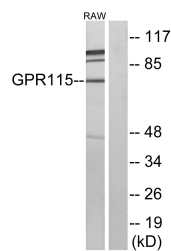
Clonality	Polyclonal
Clone ID	
Concentration	1 mg/mL
Conjugation	Unconjugated
Purification	The antibody was affinity-purified from rabbit anti-serum by affinity-chromatography.
Dilution Range	WB 1:500-1:2000 IF 1:200-1:1000 ELISA 1:10000
Formulation	PBS, 50% Glycerol, 0.5% BSA and 0.02% Sodium Azide.
Isotype	IgG
Storage Instruction	Store at -20°C for up to 1 year from the date of receipt, and avoid repeat freeze-thaw cycles.

TARGET INFORMATION

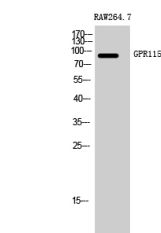
Gene ID	221393
Gene Symbol	ADGRF4
Uniprot ID	AGRF4_HUMAN
Immunogen Region	The antiserum was produced against synthesized peptide derived from human GPR115 at amino acid range 641-690 620-700 C-Term
Specificity	ADGRF4 polyclonal antibody (Adhesion G Protein-Coupled Receptor F4) binds to endogenous Adhesion G Protein-Coupled Receptor F4 at the amino acid region 620-700 C-Term.
Immunogen Sequence	



Immunofluorescence analysis of LOVO cells, using GPR115 Antibody. The picture on the right is blocked with the synthesized peptide.



Western blot analysis of lysates from RAW264.7 cells, using GPR115 Antibody. The lane on the right is blocked with the synthesized peptide.



Western blot analysis of RAW264.7 cells using GPR115 Polyclonal Antibody

This product is suitable for in-vitro studies under the RESEARCH USE ONLY [RUO] licence. This product must not be used as for diagnostic or other medical purposes.
St John's Laboratory Ltd, Knowledge Dock Business Centre, University Way, London, E16 2RD | Tel: 0208 223 3081