

## Anti-ADGRF4 antibody (300-380 Internal) (STJ93323)

STJ93323

### GENERAL INFORMATION

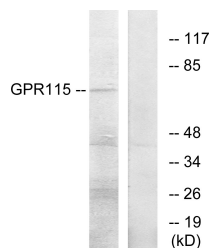
<b>Product Type</b>	Primary antibodies
<b>Short Description</b>	Rabbit polyclonal antibody anti-Adhesion G Protein-Coupled Receptor F4 (300-380 Internal) is suitable for use in Western Blot and ELISA research applications.
<b>Applications</b>	WB, ELISA
<b>Host/Source</b>	Rabbit
<b>Reactivity</b>	Human, Rat, Mouse

### PRODUCT PROPERTIES

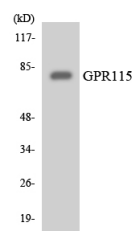
<b>Clonality</b>	Polyclonal
<b>Clone ID</b>	
<b>Concentration</b>	1 mg/mL
<b>Conjugation</b>	Unconjugated
<b>Purification</b>	The antibody was affinity-purified from rabbit anti-serum by affinity-chromatography.
<b>Dilution Range</b>	WB 1:500-1:2000 ELISA 1:5000
<b>Formulation</b>	PBS, 50% Glycerol, 0.5% BSA and 0.02% Sodium Azide.
<b>Isotype</b>	IgG
<b>Storage</b>	Store at -20°C for up to 1 year from the date of receipt, and avoid repeat freeze-thaw cycles.
<b>Instruction</b>	

### TARGET INFORMATION

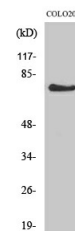
<b>Gene ID</b>	221393
<b>Gene Symbol</b>	ADGRF4
<b>Uniprot ID</b>	AGR4_HUMAN
<b>Immunogen</b>	The antiserum was produced against synthesized peptide derived from human GPR115 at amino acid range 321-370
<b>Immunogen Region</b>	300-380 Internal
<b>Specificity</b>	ADGRF4 polyclonal antibody (Adhesion G Protein-Coupled Receptor F4) binds to endogenous Adhesion G Protein-Coupled Receptor F4 at the amino acid region 300-380 Internal.
<b>Immunogen Sequence</b>	



Western blot analysis of lysates from COLO205 cells, using GPR115 Antibody. The lane on the right is blocked with the synthesized peptide.



Western blot analysis of the lysates from Jurkat cells using GPR115 antibody.



Western blot analysis of various cells using GPR115 Polyclonal Antibody