

Anti-ADGRF3 antibody (370-450 N-Term) (STJ93321)

STJ93321

GENERAL INFORMATION

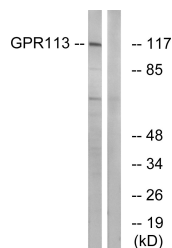
Product Type	Primary antibodies
Short Description	Rabbit polyclonal antibody anti-Adhesion G-Protein Coupled Receptor F3 (370-450 N-Term) is suitable for use in Western Blot and ELISA research applications.
Applications	WB, ELISA
Host/Source	Rabbit
Reactivity	Human, Rat, Mouse

PRODUCT PROPERTIES

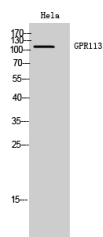
Clonality	Polyclonal
Clone ID	
Concentration	1 mg/mL
Conjugation	Unconjugated
Purification	The antibody was affinity-purified from rabbit anti-serum by affinity-chromatography.
Dilution Range	WB 1:500-1:2000 ELISA 1:40000
Formulation	PBS, 50% Glycerol, 0.5% BSA and 0.02% Sodium Azide.
Isotype	IgG
Storage Instruction	Store at -20°C for up to 1 year from the date of receipt, and avoid repeat freeze-thaw cycles.

TARGET INFORMATION

Gene ID	165082
Gene Symbol	ADGRF3
Uniprot ID	AGRFB_HUMAN
Immunogen	The antiserum was produced against synthesized peptide derived from human GPR113 at amino acid range 21-70
Immunogen Region	370-450 N-Term
Specificity	ADGRF3 polyclonal antibody (Adhesion G-Protein Coupled Receptor F3) binds to endogenous Adhesion G-Protein Coupled Receptor F3 at the amino acid region 370-450 N-Term.
Immunogen Sequence	



Western blot analysis of lysates from LOVO cells, using GPR113 Antibody. The lane on the right is blocked with the synthesized peptide.



Western blot analysis of HeLa cells using GPR113 Polyclonal Antibody diluted at 1: 2000