

Anti-GPR108 antibody (130-210 Internal) (STJ93319)

STJ93319

GENERAL INFORMATION

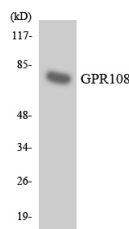
Product Type	Primary antibodies
Short Description	Rabbit polyclonal antibody anti-Protein Gpr108 (130-210 Internal) is suitable for use in Western Blot, Immunofluorescence, Immunocytochemistry and ELISA research applications.
Applications	WB, IF, ICC, ELISA
Host/Source	Rabbit
Reactivity	Human, Rat, Mouse

PRODUCT PROPERTIES

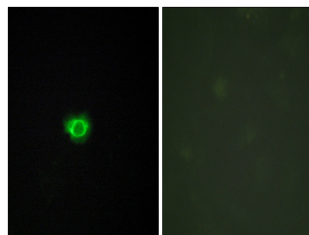
Clonality	Polyclonal
Clone ID	
Concentration	1 mg/mL
Conjugation	Unconjugated
Purification	The antibody was affinity-purified from rabbit anti-serum by affinity-chromatography.
Dilution Range	WB 1:500-1:2000 IF 1:200-1:1000 ELISA 1:5000
Formulation	PBS, 50% Glycerol, 0.5% BSA and 0.02% Sodium Azide.
Isotype	IgG
Storage Instruction	Store at -20°C for up to 1 year from the date of receipt, and avoid repeat freeze-thaw cycles.

TARGET INFORMATION

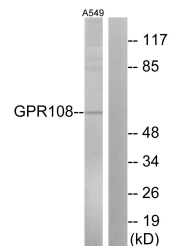
Gene ID	56927
Gene Symbol	GPR108
Uniprot ID	GP108_HUMAN
Immunogen	The antiserum was produced against synthesized peptide derived from human GPR108 at amino acid range 155-204
Immunogen Region	130-210 Internal
Specificity	GPR108 polyclonal antibody (Protein Gpr108) binds to endogenous Protein Gpr108 at the amino acid region 130-210 Internal.
Immunogen Sequence	



Western blot analysis of the lysates from HT-29 cells using GPR108 antibody.



Immunofluorescence analysis of HUVEC cells, using GPR108 Antibody. The picture on the right is blocked with the synthesized peptide.



Western blot analysis of lysates from A549 cells, using GPR108 Antibody. The lane on the right is blocked with the synthesized peptide.



Western blot analysis of various cells using GPR108 Polyclonal Antibody