

Anti-GPR101 antibody (430-510 C-Term) (STJ93314)

STJ93314

GENERAL INFORMATION

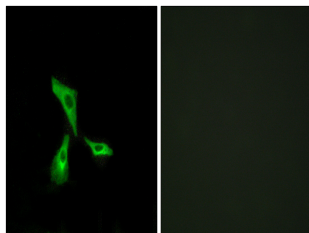
Product Type	Primary antibodies
Short Description	Rabbit polyclonal antibody anti-Probable G-Protein Coupled Receptor 101 (430-510 C-Term) is suitable for use in Western Blot, Immunofluorescence, Immunocytochemistry and ELISA research applications.
Applications	WB, IF, ICC, ELISA
Host/Source	Rabbit
Reactivity	Human, Mouse, Monkey

PRODUCT PROPERTIES

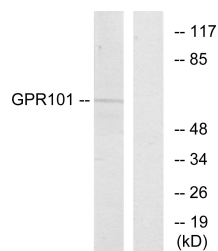
Clonality	Polyclonal
Clone ID	
Concentration	1 mg/mL
Conjugation	Unconjugated
Purification	The antibody was affinity-purified from rabbit anti-serum by affinity-chromatography.
Dilution Range	WB 1:500-1:2000 IF 1:200-1:1000 ELISA 1:5000
Formulation	PBS, 50% Glycerol, 0.5% BSA and 0.02% Sodium Azide.
Isotype	IgG
Storage Instruction	Store at 20°C for up to 1 year from the date of receipt, and avoid repeat freeze-thaw cycles.

TARGET INFORMATION

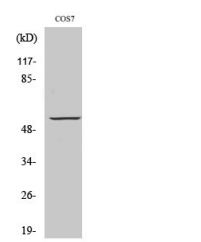
Gene ID	83550
Gene Symbol	GPR101
Uniprot ID	GP101_HUMAN
Immunogen	The antiserum was produced against synthesized peptide derived from human GPR101 at amino acid range 451-500
Immunogen Region	430-510 C-Term
Specificity	GPR101 polyclonal antibody (Probable G-Protein Coupled Receptor 101) binds to endogenous Probable G-Protein Coupled Receptor 101 at the amino acid region 430-510 C-Term.
Immunogen Sequence	



Immunofluorescence analysis of HeLa cells, using GPR101 Antibody. The picture on the right is blocked with the synthesized peptide.



Western blot analysis of lysates from COS7 cells, using GPR101 Antibody. The lane on the right is blocked with the synthesized peptide.



Western blot analysis of various cells using GPR101 Polyclonal Antibody diluted at 1: 500

This product is suitable for in-vitro studies under the RESEARCH USE ONLY [RUO] licence. This product must not be used as for diagnostic or other medical purposes.
St John's Laboratory Ltd, Knowledge Dock Business Centre, University Way, London, E16 2RD | Tel: 0208 223 3081