

## Anti-PRLHR antibody (160-240 Internal) (STJ93311)

STJ93311

### GENERAL INFORMATION

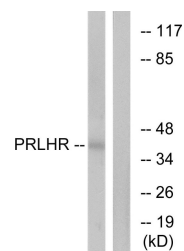
<b>Product Type</b>	Primary antibodies
<b>Short Description</b>	Rabbit polyclonal antibody anti-Prolactin-Releasing Peptide Receptor (160-240 Internal) is suitable for use in Western Blot, Immunofluorescence, Immunocytochemistry and ELISA research applications.
<b>Applications</b>	WB, IF, ICC, ELISA
<b>Host/Source</b>	Rabbit
<b>Reactivity</b>	Human, Mouse, Rat

### PRODUCT PROPERTIES

<b>Clonality</b>	Polyclonal
<b>Clone ID</b>	
<b>Concentration</b>	1 mg/mL
<b>Conjugation</b>	Unconjugated
<b>Purification</b>	The antibody was affinity-purified from rabbit anti-serum by affinity-chromatography.
<b>Dilution Range</b>	WB 1:500-1:2000 IF 1:200-1:1000 ELISA 1:20000
<b>Formulation</b>	PBS, 50% Glycerol, 0.5% BSA and 0.02% Sodium Azide.
<b>Isotype</b>	IgG
<b>Storage Instruction</b>	Store at -20°C for up to 1 year from the date of receipt, and avoid repeat freeze-thaw cycles.

### TARGET INFORMATION

<b>Gene ID</b>	2834
<b>Gene Symbol</b>	PRLHR
<b>Uniprot ID</b>	PRLHR_HUMAN
<b>Immunogen Region</b>	The antiserum was produced against synthesized peptide derived from human PRLHR at amino acid range 184-233
<b>Immunogen Region</b>	160-240 Internal
<b>Specificity</b>	PRLHR polyclonal antibody (Prolactin-Releasing Peptide Receptor) binds to endogenous Prolactin-Releasing Peptide Receptor at the amino acid region 160-240 Internal.
<b>Immunogen Sequence</b>	



Western blot analysis of lysates from Jurkat cells, using PRLHR Antibody. The lane on the right is blocked with the synthesized peptide.