

Anti-CMKLR2 antibody (90-170 Internal) (STJ93310)

STJ93310

GENERAL INFORMATION

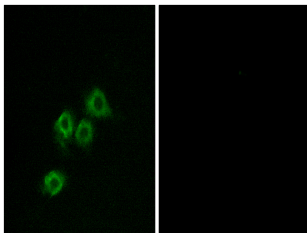
Product Type	Primary antibodies
Short Description	Rabbit polyclonal antibody anti-Chemerin-Like Receptor 2 (90-170 Internal) is suitable for use in Immunofluorescence, Immunocytochemistry and ELISA research applications.
Applications	IF, ICC, ELISA
Host/Source	Rabbit
Reactivity	Human, Mouse, Rat

PRODUCT PROPERTIES

Clonality	Polyclonal
Clone ID	
Concentration	1 mg/mL
Conjugation	Unconjugated
Purification	The antibody was affinity-purified from rabbit anti-serum by affinity-chromatography.
Dilution Range	IF 1:200-1:1000 ELISA 1:5000
Formulation	PBS, 50% Glycerol, 0.5% BSA and 0.02% Sodium Azide.
Isotype	IgG
Storage	Store at -20°C for up to 1 year from the date of receipt, and avoid repeat freeze-thaw cycles.
Instruction	

TARGET INFORMATION

Gene ID	2825
Gene Symbol	CMKLR2
Uniprot ID	CML2_HUMAN
Immunogen	The antiserum was produced against synthesized peptide derived from human GPR1 at amino acid range 121-170
Immunogen Region	90-170 Internal
Specificity	CMKLR2 polyclonal antibody (Chemerin-Like Receptor 2) binds to endogenous Chemerin-Like Receptor 2 at the amino acid region 90-170 Internal.
Immunogen Sequence	



Immunofluorescence analysis of MCF7 cells, using GPR1 Antibody. The picture on the right is blocked with the synthesized peptide.