

Anti-GNRH1 antibody (Internal) (STJ93305)

STJ93305

GENERAL INFORMATION

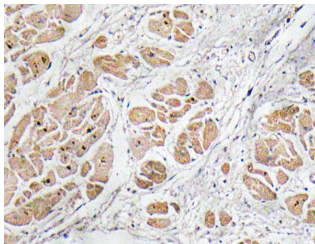
Product Type	Primary antibodies
Short Description	Rabbit polyclonal antibody anti-Progonadoliberin-1 (Internal) is suitable for use in Immunohistochemistry, Immunofluorescence and ELISA research applications.
Applications	IHC-P, IF-P, ELISA
Host/Source	Rabbit
Reactivity	Human, Rat, Mouse

PRODUCT PROPERTIES

Clonality	Polyclonal
Clone ID	
Concentration	1 mg/mL
Conjugation	Unconjugated
Purification	The antibody was affinity-purified from rabbit anti-serum by affinity-chromatography.
Dilution Range	WB 1:500-2000 IHC 1:100-1:300 ELISA 1:10000
Formulation	PBS, 50% Glycerol, 0.5% BSA and 0.02% Sodium Azide.
Isotype	IgG
Storage Instruction	Store at -20°C for up to 1 year from the date of receipt, and avoid repeat freeze-thaw cycles.

TARGET INFORMATION

Gene ID	2796
Gene Symbol	GNRH1
Uniprot ID	GON1_HUMAN
Immunogen	The antiserum was produced against synthesized peptide derived from human GnRH I at amino acid range 43-92
Immunogen Region	Internal
Specificity	GNRH1 polyclonal antibody (Progonadoliberin-1) binds to endogenous Progonadoliberin-1 at the amino acid region Internal.
Immunogen Sequence	



Immunohistochemistry analysis of GnRH I antibody in paraffin-embedded human heart tissue.