

Anti-GYS1 antibody (580-660) (STJ93298)

STJ93298

GENERAL INFORMATION

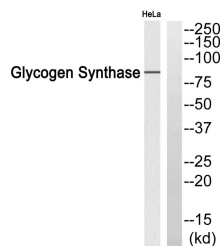
Product Type	Primary antibodies
Short Description	Rabbit polyclonal antibody anti-Glycogen Starch Synthase-Muscle (580-660) is suitable for use in Western Blot and ELISA research applications.
Applications	WB, ELISA
Host/Source	Rabbit
Reactivity	Human, Mouse

PRODUCT PROPERTIES

Clonality	Polyclonal
Clone ID	
Concentration	1 mg/mL
Conjugation	Unconjugated
Purification	The antibody was affinity-purified from rabbit anti-serum by affinity-chromatography.
Dilution Range	WB 1:500-1:2000 ELISA 1:10000
Formulation	PBS, 50% Glycerol, 0.5% BSA and 0.02% Sodium Azide.
Isotype	IgG
Storage	Store at -20°C for up to 1 year from the date of receipt, and avoid repeat freeze-thaw cycles.
Instruction	

TARGET INFORMATION

Gene ID	2997
Gene Symbol	GYS1
Uniprot ID	GYS1_HUMAN
Immunogen	The antiserum was produced against synthesized peptide derived from human Glycogen Synthase at amino acid range 611-660
Immunogen Region	580-660
Specificity	GYS1 polyclonal antibody (Glycogen Starch Synthase-Muscle) binds to endogenous Glycogen Starch Synthase-Muscle at the amino acid region 580-660.
Immunogen Sequence	



Western blot analysis of Glycogen Synthase Antibody. The lane on the right is blocked with the Glycogen Synthase peptide.