

## Anti-GYS1 antibody (580-660) (STJ93297)

STJ93297

### GENERAL INFORMATION

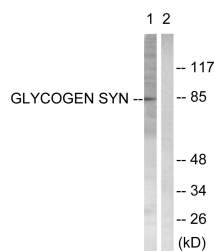
<b>Product Type</b>	Primary antibodies
<b>Short Description</b>	Rabbit polyclonal antibody anti-Glycogen Starch Synthase-Muscle (580-660) is suitable for use in Western Blot, Immunohistochemistry, Immunofluorescence and ELISA research applications.
<b>Applications</b>	WB, IHC-P, IF-P, ELISA
<b>Host/Source</b>	Rabbit
<b>Reactivity</b>	Human, Mouse, Rat

### PRODUCT PROPERTIES

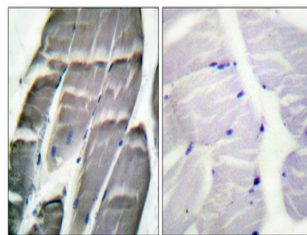
<b>Clonality</b>	Polyclonal
<b>Clone ID</b>	
<b>Concentration</b>	1 mg/mL
<b>Conjugation</b>	Unconjugated
<b>Purification</b>	The antibody was affinity-purified from rabbit anti-serum by affinity-chromatography.
<b>Dilution Range</b>	WB 1:500-1:2000 ELISA 1:10000
<b>Formulation</b>	PBS, 50% Glycerol, 0.5% BSA and 0.02% Sodium Azide.
<b>Isotype</b>	IgG
<b>Storage</b>	Store at -20°C for up to 1 year from the date of receipt, and avoid repeat freeze-thaw cycles.
<b>Instruction</b>	

### TARGET INFORMATION

<b>Gene ID</b>	<a href="#">2997</a>
<b>Gene Symbol</b>	<a href="#">GYS1</a>
<b>Uniprot ID</b>	<a href="#">GYS1_HUMAN</a>
<b>Immunogen</b>	The antiserum was produced against synthesized peptide derived from human Glycogen Synthase at amino acid range 621-670
<b>Immunogen Region</b>	580-660
<b>Specificity</b>	GYS1 polyclonal antibody (Glycogen Starch Synthase-Muscle) binds to endogenous Glycogen Starch Synthase-Muscle at the amino acid region 580-660.
<b>Immunogen Sequence</b>	



Western blot analysis of lysates from HeLa cells, treated with Serum 20% 30', using Glycogen Synthase Antibody. The lane on the right is blocked with the synthesized peptide.



Immunohistochemical analysis of paraffin-embedded Human skeletal muscle. Antibody was diluted at 1:100 (4°C overnight). High-pressure and temperature Tris-EDTA, pH8.0 was used for antigen retrieval. Negative control (right) obtained from antibody was pre-absorbed by immunogen peptide.