

Anti-SLC2A1 antibody (410-490 C-Term) (STJ93293)

STJ93293

GENERAL INFORMATION

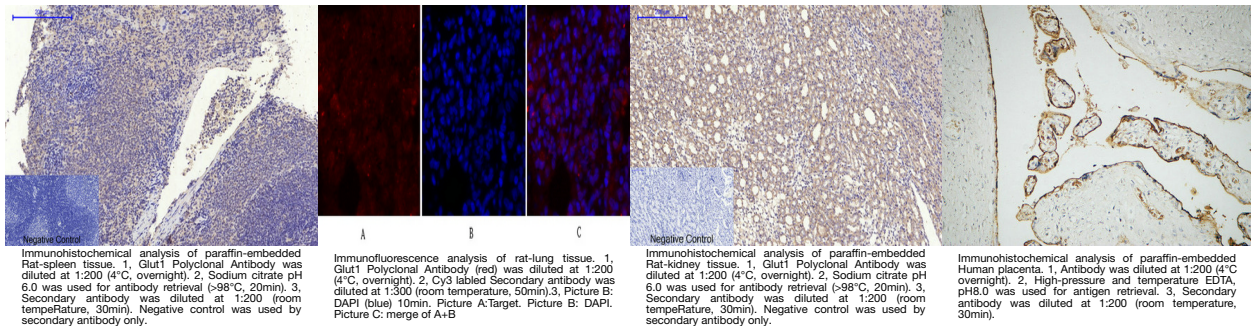
Product Type	Primary antibodies
Short Description	Rabbit polyclonal antibody anti-Solute Carrier Family 2-Facilitated Glucose Transporter Member 1 (410-490 C-Term) is suitable for use in Immunofluorescence, Immunocytochemistry, Western Blot, Immunohistochemistry and ELISA research applications.
Applications	IF, ICC, WB, IHC-P, ELISA
Host/Source	Rabbit
Reactivity	Human, Mouse, Rat

PRODUCT PROPERTIES

Clonality	Polyclonal
Clone ID	
Concentration	1 mg/mL
Conjugation	Unconjugated
Purification	The antibody was affinity-purified from rabbit anti-serum by affinity-chromatography.
Dilution	IF 1:50-200
Range	WB 1:500-1:2000 IHC 1:100-1:300 ELISA 1:40000
Formulation	PBS, 50% Glycerol, 0.5% BSA and 0.02% Sodium Azide.
Isotype	IgG
Storage Instruction	Store at -20°C for up to 1 year from the date of receipt, and avoid repeat freeze-thaw cycles.

TARGET INFORMATION

Gene ID	6513
Gene Symbol	SLC2A1
Uniprot ID	GTR1_HUMAN
Immunogen	The antiserum was produced against synthesized peptide derived from human GLUT1 at amino acid range 441-490
Immunogen Region	410-490 C-Term
Specificity	SLC2A1 polyclonal antibody (Solute Carrier Family 2-Facilitated Glucose Transporter Member 1) binds to endogenous Solute Carrier Family 2-Facilitated Glucose Transporter Member 1 at the amino acid region 410-490 C-Term.
Immunogen Sequence	



This product is suitable for in-vitro studies under the RESEARCH USE ONLY [RUO] licence. This product must not be used as for diagnostic or other medical purposes.
 St John's Laboratory Ltd, Knowledge Dock Business Centre, University Way, London, E16 2RD | Tel: 0208 223 3081