

Anti-GRIA4 antibody (800-880) (STJ93289)

STJ93289

GENERAL INFORMATION

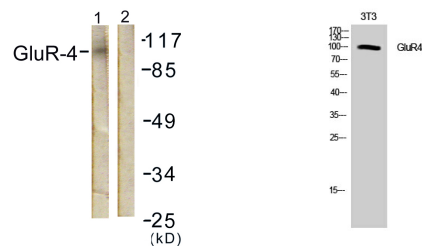
Product Type	Primary antibodies
Short Description	Rabbit polyclonal antibody anti-Glutamate Receptor 4 (800-880) is suitable for use in Western Blot, Immunohistochemistry, Immunofluorescence and ELISA research applications.
Applications	WB, IHC-P, IF-P, ELISA
Host/Source	Rabbit
Reactivity	Human, Mouse, Rat

PRODUCT PROPERTIES

Clonality	Polyclonal
Clone ID	
Concentration	1 mg/mL
Conjugation	Unconjugated
Purification	The antibody was affinity-purified from rabbit anti-serum by affinity-chromatography.
Dilution Range	WB 1:500-1:2000 IHC 1:100-1:300 ELISA 1:20000
Formulation	PBS, 50% Glycerol, 0.5% BSA and 0.02% Sodium Azide.
Isotype	IgG
Storage Instruction	Store at -20°C for up to 1 year from the date of receipt, and avoid repeat freeze-thaw cycles.

TARGET INFORMATION

Gene ID	2893
Gene Symbol	GRIA4
Uniprot ID	GRIA4_HUMAN
Immunogen Region	The antiserum was produced against synthesized peptide derived from human GluR4 at amino acid range 828-877
Immunogen Region	800-880
Specificity	GRIA4 polyclonal antibody (Glutamate Receptor 4) binds to endogenous Glutamate Receptor 4 at the amino acid region 800-880.
Immunogen Sequence	



Western blot analysis of lysates from NIH/3T3 cells, treated with Forskolin 40nM 30', using GluR4 Antibody. The lane on the right is blocked with the synthesized peptide.

Western blot analysis of NIH-3T3 cells using GluR4 Polyclonal Antibody

This product is suitable for in-vitro studies under the RESEARCH USE ONLY [RUO] licence. This product must not be used as for diagnostic or other medical purposes.
St John's Laboratory Ltd, Knowledge Dock Business Centre, University Way, London, E16 2RD | Tel: 0208 223 3081